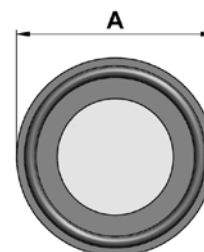




4.5 ORIFICE TO CLAMP CONNECTION ACCORDING DIN32676

TECHNICAL DATA

Standard sizes	<ul style="list-style-type: none"> • DIN DN10 - DIN DN100 • ISO DN08 - ISO DN100 • OD 1/2" - 4"
Material	Medium contacted: <ul style="list-style-type: none"> • Ws. 14435 BN2 (316L) • Special materials e.g. 1.4539, Hastelloy 2.4602, Titan etc. on request
Gasket	Standard gaskets: <ul style="list-style-type: none"> • EPDM • Silicone and special materials on request
Surface quality	Medium contacted: <ul style="list-style-type: none"> • machined surface Ra < 0,6µm • elektro polished Ra < 0,5µm • elektro polished Ra < 0,25µm • other qualities on request
Tracability	Medium contacted material marked with material number and heat number
Media	Gases and liquids
Operating temperature	-10°C to +140°C See temperature resistance chart of gaskets
Operatin pressure	16 bar
Operating temperature gaskets	• EPDM: -40°C to +90°C, kurzzeitig to +140°C
Normen	Rohranschlussmaße: <ul style="list-style-type: none"> • DIN (DIN11866 Reihe A) • ISO (DIN11866 Reihe B) • OD (DIN11866 Reihe C)
Orifice	Bore diameter standard: 2mm central other bore hole diameters oder excentrical bore hole on demand
Kennzeichnung	Orifice: no labelling O-Ring: no labelling
Certification	Medium contacted: <ul style="list-style-type: none"> • EN 10204 / 3.1 Medium contacted gaskets: <ul style="list-style-type: none"> • FDA-conform, USP-Class VI, TSE-free according to selected gasket material or Customer preference



Blende ohne Bohrung kpl.
für TC-Verbindung DIN32676

4824 2015 0000 0301

4.5 ORIFICE TO CLAMP CONNECTION ACCORDING DIN32676

4.5.1 ORIFICE WITHOUT HOLE INCL: GASKET FOR CLAMP CONNECTION ACCORDING DIN32676

Size	Item number	Diam. AD [mm]	Length L [mm]									
DIN DN10	4824 1010 0000 0301	25.00	2.00									
DIN DN15	4824 1015 0000 0301	25.00	2.00									
DIN DN20	4824 1020 0000 0301	25.00	2.00									
DIN DN25	4824 1025 0000 0301	34.00	2.00									
DIN DN32	4824 1032 0000 0301	34.00	2.00									
DIN DN40	4824 1040 0000 0301	34.00	2.00									
DIN DN50	4824 1050 0000 0301	50.50	3.00									
DIN DN65	4824 1065 0000 0301	50.50	3.00									
DIN DN80	4824 1080 0000 0301	50.50	3.00									
DIN DN100	4824 1100 0000 0301	64.00	3.00									
ISO DN08	4824 2008 0000 0301	25.00	2.00									
ISO DN10	4824 2010 0000 0301	25.00	2.00									
ISO DN15	4824 2015 0000 0301	50.50	2.00									
ISO DN20	4824 2020 0000 0301	50.50	2.00									
ISO DN25	4824 2025 0000 0301	50.50	2.00									
ISO DN32	4824 2032 0000 0301	64.00	2.00									
ISO DN40	4824 2040 0000 0301	64.00	2.00									
ISO DN50	4824 2050 0000 0301	77.50	2.00									
ISO DN65	4824 2065 0000 0301	91.00	3.00									
ISO DN80	4824 2080 0000 0301	106.00	3.00									
ISO DN100	4824 2100 0000 0301	130.00	3.00									
OD 1/2"	4824 3005 0000 0301	25.00	2.00									
OD 3/4"	4824 3007 0000 0301	25.00	2.00									
OD 1"	4824 3010 0000 0301	50.50	2.00									
OD 1 1/2"	4824 3015 0000 0301	50.50	2.00									
OD 2"	4824 3020 0000 0301	64.00	2.00									
OD 2 1/2"	4824 3025 0000 0301	77.50	2.00									
OD 3"	4824 3030 0000 0301	91.00	2.00									
OD 4"	4824 3040 0000 0301	106.00	3.00									

Available materials:

(Item-no. = 4. Block figure 1-3)

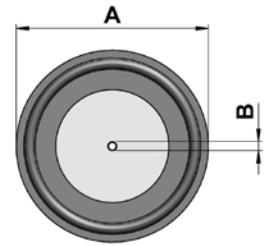
Item-No.	Material
030	1.4435 BN2
045	1.4539
060	2.4602 Hastelloy
070	Titan Grade 2

Available surface qualities:

(Item-No. = 4. Block figure 4)

Item-No.	Medium contacted surface
0	machined surface Ra<=0,6µm
1	electro polished Ra<=0,5µm
2	electro polished Ra<=0,25µm

Note: Actual data to collect at www.elpotech.de. Specifications and design are subject to change without notice. Date of revision: 05/2018



Blende mit Bohrung kpl.
für TC-Verbindung DIN32676
4825 2015 0002 0301

4.5 ORIFICE TO CLAMP CONNECTION ACCORDING DIN32676

4.5.2 ORIFICE WITH CENTRAL HOLE CPL. WITH GASKET FOR CLAMP CONNECTION ACCORDING DIN32676

Size	Item number	Diam. AD [mm]	Length L [mm]	Bore Diam. ID [mm]									
DIN DN10	4825 1010 0002 0301	25.00	2.00	2.00*									
DIN DN15	4825 1015 0002 0301	25.00	2.00	2.00*									
DIN DN20	4825 1020 0002 0301	25.00	2.00	2.00*									
DIN DN25	4825 1025 0002 0301	34.00	2.00	2.00*									
DIN DN32	4825 1032 0002 0301	34.00	2.00	2.00*									
DIN DN40	4825 1040 0002 0301	34.00	2.00	2.00*									
DIN DN50	4825 1050 0002 0301	50.50	3.00	2.00*									
DIN DN65	4825 1065 0002 0301	50.50	3.00	2.00*									
DIN DN80	4825 1080 0002 0301	50.50	3.00	2.00*									
DIN DN100	4825 1100 0002 0301	64.00	3.00	2.00*									
ISO DN08	4825 2008 0002 0301	25.00	2.00	2.00*									
ISO DN10	4825 2010 0002 0301	25.00	2.00	2.00*									
ISO DN15	4825 2015 0002 0301	50.50	2.00	2.00*									
ISO DN20	4825 2020 0002 0301	50.50	2.00	2.00*									
ISO DN25	4825 2025 0002 0301	50.50	2.00	2.00*									
ISO DN32	4825 2032 0002 0301	64.00	2.00	2.00*									
ISO DN40	4825 2040 0002 0301	64.00	2.00	2.00*									
ISO DN50	4825 2050 0002 0301	77.50	2.00	2.00*									
ISO DN65	4825 2065 0002 0301	91.00	3.00	2.00*									
ISO DN80	4825 2080 0002 0301	106.00	3.00	2.00*									
ISO DN100	4825 2100 0002 0301	130.00	3.00	2.00*									
OD 1/2"	4825 3005 0002 0301	25.00	2.00	2.00*									
OD 3/4"	4825 3007 0002 0301	25.00	2.00	2.00*									
OD 1"	4825 3010 0002 0301	50.50	2.00	2.00*									
OD 1 1/2"	4825 3015 0002 0301	50.50	2.00	2.00*									
OD 2"	4825 3020 0002 0301	64.00	2.00	2.00*									
OD 2 1/2"	4825 3025 0002 0301	77.50	2.00	2.00*									
OD 3"	4825 3030 0002 0301	91.00	2.00	2.00*									
OD 4"	4825 3040 0002 0301	106.00	3.00	2.00*									

*bespoke diameter on demand

Available materials:

(Item-no. = 4. Block figure 1-3)

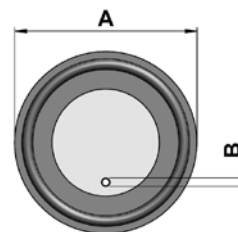
Item-No.	Material
030	1.4435 BN2
045	1.4539
060	2.4602 Hastelloy
070	Titan Grade 2

Available surface qualities:

(Item-No. = 4. Block figure 4)

Item-No.	Medium contacted surface
0	machined surface Ra<=0,6µm
1	electro polished Ra<=0,5µm
2	electro polished Ra<=0,25µm

Note: Actual data to collect at www.elpotech.de. Specifications and design are subject to change without notice. Date of revision: 05/2018



Blende mit exzentrischer Bohrung
kpl. für TC-Verbindung DIN32676
4828 2015 0002 0301

4.5 ORIFICE TO CLAMP CONNECTION ACCORDING DIN32676

4.5.3 ORIFICE WITH EXCENTRIC HOLE CPL. WITH GASKET FOR CLAMP CONNECTION ACC. DIN32676

Size	Item number	Diam. AD [mm]	Length L [mm]	Bore Diam. ID								
DIN DN10	4828 1010 0002 0301	25.00	2.00	2.00*								
DIN DN15	4828 1015 0002 0301	25.00	2.00	2.00*								
DIN DN20	4828 1020 0002 0301	25.00	2.00	2.00*								
DIN DN25	4828 1025 0002 0301	34.00	2.00	2.00*								
DIN DN32	4828 1032 0002 0301	34.00	2.00	2.00*								
DIN DN40	4828 1040 0002 0301	34.00	2.00	2.00*								
DIN DN50	4828 1050 0002 0301	50.50	3.00	2.00*								
DIN DN65	4828 1065 0002 0301	50.50	3.00	2.00*								
DIN DN80	4828 1080 0002 0301	50.50	3.00	2.00*								
DIN DN100	4828 1100 0002 0301	64.00	3.00	2.00*								
ISO DN08	4828 2008 0002 0301	25.00	2.00	2.00*								
ISO DN10	4828 2010 0002 0301	25.00	2.00	2.00*								
ISO DN15	4828 2015 0002 0301	50.50	2.00	2.00*								
ISO DN20	4828 2020 0002 0301	50.50	2.00	2.00*								
ISO DN25	4828 2025 0002 0301	50.50	2.00	2.00*								
ISO DN32	4828 2032 0002 0301	64.00	2.00	2.00*								
ISO DN40	4828 2040 0002 0301	64.00	2.00	2.00*								
ISO DN50	4828 2050 0002 0301	77.50	2.00	2.00*								
ISO DN65	4828 2065 0002 0301	91.00	3.00	2.00*								
ISO DN80	4828 2080 0002 0301	106.00	3.00	2.00*								
ISO DN100	4828 2100 0002 0301	130.00	3.00	2.00*								
OD 1/2"	4828 3005 0002 0301	25.00	2.00	2.00*								
OD 3/4"	4828 3007 0002 0301	25.00	2.00	2.00*								
OD 1"	4828 3010 0002 0301	50.50	2.00	2.00*								
OD 1 1/2"	4828 3015 0002 0301	50.50	2.00	2.00*								
OD 2"	4828 3020 0002 0301	64.00	2.00	2.00*								
OD 2 1/2"	4828 3025 0002 0301	77.50	2.00	2.00*								
OD 3"	4828 3030 0002 0301	91.00	2.00	2.00*								
OD 4"	4828 3040 0002 0301	106.00	3.00	2.00*								

* bespoke diameter on demand

Available materials:

(Item-no. = 4. Block figure 1-3)

Item-No.	Material
030	1.4435 BN2
045	1.4539
060	2.4602 Hastelloy
070	Titan Grade 2

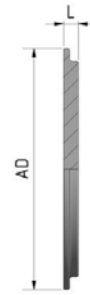
Available surface qualities:

(Item-No. = 4. Block figure 4)

Item-No.	Medium contacted surface
0	machined surface Ra<=0,6µm
1	electro polished Ra<=0,5µm
2	electro polished Ra<=0,25µm

Note: Actual data to collect at www.elpotech.de. Specifications and design are subject to change without notice. Date of revision: 05/2018

elpotech GmbH & Co. KG | Max-Eyth-Straße 1 | D-71691 Freiberg a.N. | Tel. +49 (0) 7141-68 87 49 0 | Fax +49 (0) 7141-68 87 49 44 | info@elpotech.de | www.elpotech.de



4.5 ORIFICE TO CLAMP CONNECTION ACCORDING DIN32676

4.5.4 ORIFICE WITHOUT HOLE TO CLAMP CONNECTION ACCORDING DIN32676

Size	Item number	Length L [mm]										
DIN DN10	4806 1010 0000 0301	2.00										
DIN DN15	4806 1015 0000 0301	2.00										
DIN DN20	4806 1020 0000 0301	2.00										
DIN DN25	4806 1025 0000 0301	2.00										
DIN DN32	4806 1032 0000 0301	2.00										
DIN DN40	4806 1040 0000 0301	2.00										
DIN DN50	4806 1050 0000 0301	3.00										
DIN DN65	4806 1065 0000 0301	3.00										
DIN DN80	4806 1080 0000 0301	3.00										
DIN DN100	4806 1100 0000 0301	3.00										
ISO DN08	4806 2008 0000 0301	2.00										
ISO DN10	4806 2010 0000 0301	2.00										
ISO DN15	4806 2015 0000 0301	2.00										
ISO DN20	4806 2020 0000 0301	2.00										
ISO DN25	4806 2025 0000 0301	2.00										
ISO DN32	4806 2032 0000 0301	2.00										
ISO DN40	4806 2040 0000 0301	2.00										
ISO DN50	4806 2050 0000 0301	2.00										
ISO DN65	4806 2065 0000 0301	3.00										
ISO DN80	4806 2080 0000 0301	3.00										
ISO DN100	4806 2100 0000 0301	3.00										
OD 1/2"	4806 3005 0000 0301	2.00										
OD 3/4"	4806 3007 0000 0301	2.00										
OD 1"	4806 3010 0000 0301	2.00										
OD 1 1/2"	4806 3015 0000 0301	2.00										
OD 2"	4806 3020 0000 0301	2.00										
OD 2 1/2"	4806 3025 0000 0301	2.00										
OD 3"	4806 3030 0000 0301	2.00										
OD 4"	4806 3040 0000 0301	3.00										

Available materials:

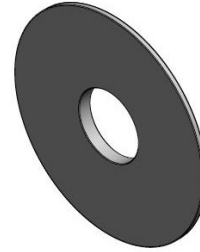
(Item-no. = 4, Block figure 1-3)

Item-No.	Material
030	1.4435 BN2
045	1.4539
060	2.4602 Hastelloy
070	Titan Grade 2

Available surface qualities:

(Item-No. = 4, Block figure 4)

Item-No.	Medium contacted surface
0	machined surface Ra<=0,6µm
1	electro polished Ra<=0,5µm
2	electro polished Ra<=0,25µm



4.5 ORIFICE TO CLAMP CONNECTION ACCORDING DIN32676

4.5.5 ORIFICE WITH CENTRAL HOLE FOR CLAMP-ANSCHLUSS NACH DIN32676

Size	Item number	Length L [mm]	Bore Diam. ID										
DIN DN10	4807 1010 0000 0301	2.00	2.00*										
DIN DN15	4807 1015 0000 0301	2.00	2.00*										
DIN DN20	4807 1020 0000 0301	2.00	2.00*										
DIN DN25	4807 1025 0000 0301	2.00	2.00*										
DIN DN32	4807 1032 0000 0301	2.00	2.00*										
DIN DN40	4807 1040 0000 0301	2.00	2.00*										
DIN DN50	4807 1050 0000 0301	2.00	2.00*										
DIN DN65	4807 1065 0000 0301	3.00	2.00*										
DIN DN80	4807 1080 0000 0301	3.00	2.00*										
DIN DN100	4807 1100 0000 0301	3.00	2.00*										
ISO DN08	4807 2008 0000 0301	2.00	2.00*										
ISO DN10	4807 2010 0000 0301	2.00	2.00*										
ISO DN15	4807 2015 0000 0301	2.00	2.00*										
ISO DN20	4807 2020 0000 0301	2.00	2.00*										
ISO DN25	4807 2025 0000 0301	2.00	2.00*										
ISO DN32	4807 2032 0000 0301	2.00	2.00*										
ISO DN40	4807 2040 0000 0301	2.00	2.00*										
ISO DN50	4807 2050 0000 0301	2.00	2.00*										
ISO DN65	4807 2065 0000 0301	3.00	2.00*										
ISO DN80	4807 2080 0000 0301	3.00	2.00*										
ISO DN100	4807 2100 0000 0301	3.00	2.00*										
OD 1/2"	4807 3005 0000 0301	2.00	2.00*										
OD 3/4"	4807 3007 0000 0301	2.00	2.00*										
OD 1"	4807 3010 0000 0301	2.00	2.00*										
OD 1 1/2"	4807 3015 0000 0301	2.00	2.00*										
OD 2"	4807 3020 0000 0301	2.00	2.00*										
OD 2 1/2"	4807 3025 0000 0301	2.00	2.00*										
OD 3"	4807 3030 0000 0301	2.00	2.00*										
OD 4"	4807 3040 0000 0301	3.00	2.00*										

*bespoke sidiameter on demand

Available materials:

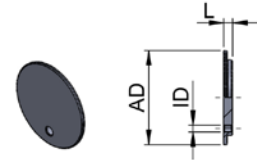
(Item-no. = 4. Block figure 1-3)

Item-No.	Material
030	1.4435 BN2
045	1.4539
060	2.4602 Hastelloy
070	Titan Grade 2

Available surface qualities:

(Item-No. = 4. Block figure 4)

Item-No.	Medium contacted surface
0	machined surface Ra<=0,6µm
1	electro polished Ra<=0,5µm
2	electro polished Ra<=0,25µm



Blende mit exzentrischer Bohrung für TC-Verbindung DIN32676

4808 2015 0002 0301

4.5 ORIFICE TO CLAMP CONNECTION ACCORDING DIN32676

4.5.6 ORIFICE WITH EXCENTRIC HOLE FOR CLAMP CONNECTION ACCORDING DIN32676

Size	Item number	Length L [mm]	Bore Diam. ID										
DIN DN10	4808 1010 0000 0301	2.00	2.00*										
DIN DN15	4808 1015 0000 0301	2.00	2.00*										
DIN DN20	4808 1020 0000 0301	2.00	2.00*										
DIN DN25	4808 1025 0000 0301	2.00	2.00*										
DIN DN32	4808 1032 0000 0301	2.00	2.00*										
DIN DN40	4808 1040 0000 0301	2.00	2.00*										
DIN DN50	4808 1050 0000 0301	2.00	2.00*										
DIN DN65	4808 1065 0000 0301	3.00	2.00*										
DIN DN80	4808 1080 0000 0301	3.00	2.00*										
DIN DN100	4808 1100 0000 0301	3.00	2.00*										
ISO DN08	4808 2008 0000 0301	2.00	2.00*										
ISO DN10	4808 2010 0000 0301	2.00	2.00*										
ISO DN15	4808 2015 0000 0301	2.00	2.00*										
ISO DN20	4808 2020 0000 0301	2.00	2.00*										
ISO DN25	4808 2025 0000 0301	2.00	2.00*										
ISO DN32	4808 2032 0000 0301	2.00	2.00*										
ISO DN40	4808 2040 0000 0301	2.00	2.00*										
ISO DN50	4808 2050 0000 0301	2.00	2.00*										
ISO DN65	4808 2065 0000 0301	3.00	2.00*										
ISO DN80	4808 2080 0000 0301	3.00	2.00*										
ISO DN100	4808 2100 0000 0301	3.00	2.00*										
OD 1/2"	4808 3005 0000 0301	2.00	2.00*										
OD 3/4"	4808 3007 0000 0301	2.00	2.00*										
OD 1"	4808 3010 0000 0301	2.00	2.00*										
OD 1 1/2"	4808 3015 0000 0301	2.00	2.00*										
OD 2"	4808 3020 0000 0301	2.00	2.00*										
OD 2 1/2"	4808 3025 0000 0301	2.00	2.00*										
OD 3"	4808 3030 0000 0301	2.00	2.00*										
OD 4"	4808 3040 0000 0301	3.00	2.00*										

* bespoke diameter on demand

Available materials:

(Item-no. = 4. Block figure 1-3)

Item-No.	Material
030	1.4435 BN2
045	1.4539
060	2.4602 Hastelloy
070	Titan Grade 2

Available surface qualities:

(Item-No. = 4. Block figure 4)

Item-No.	Medium contacted surface
0	machined surface Ra<=0,6µm
1	electro polished Ra<=0,5µm
2	electro polished Ra<=0,25µm

Note: Actual data to collect at www.elpotech.de. Specifications and design are subject to change without notice. Date of revision: 05/2018

elpotech GmbH & Co. KG | Max-Eyth-Straße 1 | D-71691 Freiberg a.N. | Tel. +49 (0) 7141-68 87 49 0 | Fax +49 (0) 7141-68 87 49 44 | info@elpotech.de | www.elpotech.de



4.5 ORIFICE TO CLAMP CONNECTION ACCORDING DIN32676

4.5.4 CLAMP GASKET FOR CLAMP CONNECTION ACCORDING DIN32676

Size	Item number	Diam. AD [mm]	Diam. ID [mm]										
DIN DN10	4812 1010 0000 1000	34.00	10.20										
DIN DN15	4812 1015 0000 1000	34.00	16.20										
DIN DN20	4812 1020 0000 1000	34.00	20.20										
DIN DN25	4812 1025 0000 1000	50.50	26.20										
DIN DN32	4812 1032 0000 1000	50.50	32.20										
DIN DN40	4812 1040 0000 1000	50.50	38.20										
DIN DN50	4812 1050 0000 1000	64.00	50.20										
DIN DN65	4812 1065 0000 1000	91.00	66.20										
DIN DN80	4812 1080 0000 1000	106.00	81.20										
DIN DN100	4812 1100 0000 1000	119.00	100.20										
ISO DN08	4812 2008 0000 1000	22.00	10.50										
ISO DN10	4812 2010 0000 1000	22.00	14.20										
ISO DN15	4812 2015 0000 1000	50.50	18.30										
ISO DN20	4812 2020 0000 1000	50.50	23.90										
ISO DN25	4812 2025 0000 1000	50.50	29.90										
ISO DN32	4812 2032 0000 1000	64.00	38.60										
ISO DN40	4812 2040 0000 1000	64.00	4.50										
ISO DN50	4812 2050 0000 1000	77.50	56.50										
ISO DN65	4812 2065 0000 1000	91.00	72.30										
ISO DN80	4812 2080 0000 1000	106.00	84.50										
ISO DN100	4812 2100 0000 1000	130.00	109.90										
OD 1/2"	4812 3005 0000 1000	22.00	9.60										
OD 3/4"	4812 3007 0000 1000	22.00	16.00										
OD 1"	4812 3010 0000 1000	50.50	22.30										
OD 1 1/2"	4812 3015 0000 1000	50.50	35.00										
OD 2"	4812 3020 0000 1000	64.00	47.70										
OD 2 1/2"	4812 3025 0000 1000	77.50	60.40										
OD 3"	4812 3030 0000 1000	91.00	73.10										
OD 4"	4812 3040 0000 1000	119.00	97.60										

Available materials:

(Item-no. = 4. Block figure 1-4)

Item-No.	Material
1000	EPDM
1030	Silikon