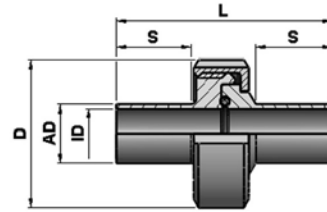


## 1.2.1 ASEPTIC CONNECTION ACCORDING DIN11864-1 FORM A

### TECHNICAL DATA

<b>Standard sizes</b>	<ul style="list-style-type: none"> <li>• DIN DN10 - DIN DN100</li> <li>• ISO DN08 - ISO DN80</li> <li>• OD 1/2" - 4"</li> </ul>
<b>Material</b>	<p>Medium contacted:</p> <ul style="list-style-type: none"> <li>• Ws. 1.4404 (316L)</li> <li>• Ws. 14435 BN2 (316L)</li> <li>• Special materials e.g. 1.4539, Hastelloy 2.4602, Titan etc. on request</li> </ul> <p>Non medium contacted:</p> <ul style="list-style-type: none"> <li>• 1.4301/1.4305 or equivalent</li> </ul>
<b>Gasket</b>	<p>Standard gaskets:</p> <ul style="list-style-type: none"> <li>• EPDM</li> <li>• Special materials on request</li> </ul>
<b>Surface quality</b>	<p>Medium contacted:</p> <ul style="list-style-type: none"> <li>• machined surface Ra &lt; 0,6µm</li> <li>• elektro polished Ra &lt; 0,5µm</li> <li>• elektro polished Ra &lt; 0,25µm</li> <li>• other qualities on request</li> </ul> <p>Non medium contacted:</p> <ul style="list-style-type: none"> <li>• elektro polished Ra &gt; 1,6µm</li> </ul>
<b>Tracability</b>	Medium contacted material marked with material number and heat number
<b>Media</b>	Gases and liquids
<b>Operating temperature</b>	-10°C to +140°C See temperature resistance chart of gaskets
<b>Operating pressure</b>	<ul style="list-style-type: none"> <li>• DIN DN10 – DIN DN40 = 40 bar</li> <li>• DIN DN50 – DIN DN100 = 25 bar</li> <li>• ISO DN08 – DN25 = 40 bar</li> <li>• ISO DN32 – DN80 = 25 bar</li> <li>• OD 1/2" – 1 1/2" = 40 bar</li> <li>• OD 2" – 4" = 25 bar</li> </ul>
<b>Operating temperature gaskets</b>	• EPDM: -40°C to +90°C, temporary to +150°C
<b>Applicable standards</b>	<p>Pipe dimensions:</p> <ul style="list-style-type: none"> <li>• DIN (DIN11866 dimension series A)</li> <li>• ISO (DIN11866 dimension series B)</li> <li>• OD (DIN11866 dimension series C)</li> </ul>
<b>Labelling</b>	<p>Ferrule etc.: company name, item number, size, material, heat number</p> <p>Gasket: no labelling</p>
<b>Certification</b>	<p>Medium contacted:</p> <ul style="list-style-type: none"> <li>• EN 10204 / 3.1</li> </ul> <p>Medium contacted gaskets:</p> <ul style="list-style-type: none"> <li>• FDA-conform, USP-Class VI, TSE-free according to selected gasket material or Customer preference</li> </ul>



Aseptik-Verschraubung kpl.

## 1.2.1 ASEPTIC CONNECTION ACCORDING DIN11864-1 FORM A

### 1.2.1.0 ASEPTIC CONNECTION COMPLETE

Size	Item number	Pipe AD [mm]	Pipe ID [mm]	Length L [mm]	Length S [mm]	Diam. D [mm]	Thread G [mm]				
DIN DN10	0110 1010 0000 0301	13.00	10.00	76.00	27.00	38.00	RD 28x1/8				
DIN DN15	0110 1015 0000 0301	19.00	16.00	76.00	27.00	44.00	RD 34x1/8				
DIN DN20	0110 1020 0000 0301	23.00	20.00	76.00	26.00	54.00	RD 44x1/6				
DIN DN25	0110 1025 0000 0301	29.00	26.00	77.00	26.00	63.00	RD 52x1/6				
DIN DN32	0110 1032 0000 0301	35.00	32.00	88.00	32.00	70.00	RD 58x1/6				
DIN DN40	0110 1040 0000 0301	41.00	38.00	88.00	31.00	78.00	RD 65x1/6				
DIN DN50	0110 1050 0000 0301	53.00	50.00	89.00	30.00	92.00	RD 78x1/6				
DIN DN65	0110 1065 0000 0301	70.00	66.00	113.00	40.00	112.00	RD 95x1/6				
DIN DN80	0110 1080 0000 0301	85.00	81.00	117.00	40.00	127.00	RD 110x1/4				
DIN DN100	0110 1100 0000 0301	104.00	100.00	120.00	40.00	148.00	RD 130x1/4				
ISO DN08	0110 2008 0000 0301	13.50	10.30	76.00	27.00	38.00	RD 28x1/8				
ISO DN10	0110 2010 0000 0301	17.20	14.00	76.00	27.00	44.00	RD 34x1/8				
ISO DN15	0110 2015 0000 0301	21.30	18.10	78.00	27.00	54.00	RD 44x1/6				
ISO DN20	0110 2020 0000 0301	26.90	23.70	78.00	27.00	63.00	RD 52x1/6				
ISO DN25	0110 2025 0000 0301	33.70	29.70	88.00	32.00	70.00	RD 58x1/6				
ISO DN32	0110 2032 0000 0301	42.40	38.40	88.00	32.00	78.00	RD 65x1/6				
ISO DN40	0110 2040 0000 0301	48.30	44.30	90.00	31.00	92.00	RD 78x1/6				
ISO DN50	0110 2050 0000 0301	60.30	56.30	114.00	40.00	112.00	RD 95x1/6				
ISO DN65	0110 2065 0000 0301	76.10	72.10	117.00	40.00	127.00	RD 110x1/4				
ISO DN80	0110 2080 0000 0301	88.90	84.30	122.00	40.00	148.00	RD 130x1/4				
OD 1/2"	0110 3005 0000 0301	12.70	9.40	76.00	27.00	38.00	RD 28x1/8				
OD 3/4"	0110 3007 0000 0301	19.05	15.75	76.00	27.00	44.00	RD 34x1/8				
OD 1"	0110 3010 0000 0301	25.40	22.10	77.00	26.00	63.00	RD 52x1/6				
OD 1 1/2"	0110 3015 0000 0301	38.10	34.80	88.00	30.00	78.00	RD 65x1/6				
OD 2"	0110 3020 0000 0301	50.80	47.50	95.00	30.00	92.00	RD 78x1/6				
OD 2 1/2"	0110 3025 0000 0301	63.50	60.20	115.00	40.00	112.00	RD 95x1/6				
OD 3"	0110 3030 0000 0301	76.20	72.90	117.00	40.00	127.00	RD 110x1/4				
OD 4"	0110 3040 0000 0301	101.60	97.38	119.00	40.00	148.00	RD 130x1/4				

Available materials:

(Item-no. = 4. Block figure 1-3)

Item-No.	Material
020	1.4404
030	1.4435 BN2
045	1.4539
060	2.4602 Hastelloy
070	Titan Grade 2

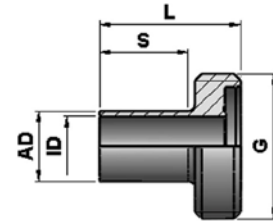
Available surface qualities:

(Item-No. = 4. Block figure 4)

Item-No.	Medium contacted surface
0	machined surface Ra<=0,6µm
1	electro polished Ra<=0,5µm
2	electro polished Ra<=0,25µm

Note: Actual data to collect at [www.elpotech.de](http://www.elpotech.de). Specifications and design are subject to change without notice. Date of revision: 05/2018

elpotech GmbH & Co. KG | Max-Eyth-Straße 1 | D-71691 Freiberg a.N. | Tel. +49 (0) 7141-68 87 49 0 | Fax +49 (0) 7141-68 87 49 44 | info@elpotech.de | [www.elpotech.de](http://www.elpotech.de)



Aseptik-Gewindestutzen

## 1.2.1 ASEPTIC CONNECTION ACCORDING DIN11864-1 FORM A

### 1.2.1.1 ASEPTIC FERRULE FEMALE

Size	Item number	Pipe AD [mm]	Pipe ID [mm]	Length L [mm]	Length S [mm]	Thread G [mm]					
DIN DN10	0111 1010 0000 0301	13.00	10.00	41.00	27.00	RD 28x1/8"					
DIN DN15	0111 1015 0000 0301	19.00	16.00	41.00	27.00	RD 34x1/8"					
DIN DN20	0111 1020 0000 0301	23.00	20.00	46.00	26.00	RD 44x1/6"					
DIN DN25	0111 1025 0000 0301	29.00	26.00	46.00	26.00	RD 52x1/6"					
DIN DN32	0111 1032 0000 0301	35.00	32.00	48.00	32.00	RD 58x1/6"					
DIN DN40	0111 1040 0000 0301	41.00	38.00	48.00	31.00	RD 65x1/6"					
DIN DN50	0111 1050 0000 0301	53.00	50.00	48.00	30.00	RD 78x1/6"					
DIN DN65	0111 1065 0000 0301	70.00	66.00	60.00	40.00	RD 95x1/6"					
DIN DN80	0111 1080 0000 0301	85.00	81.00	64.00	40.00	RD 110x1/4"					
DIN DN100	0111 1100 0000 0301	104.00	100.00	64.00	40.00	RD 130x1/4"					
ISO DN08	0111 2008 0000 0301	13.50	10.30	41.00	27.00	RD 28x1/8"					
ISO DN10	0111 2010 0000 0301	17.20	14.00	41.00	27.00	RD 34x1/8"					
ISO DN15	0111 2015 0000 0301	21.30	18.10	43.00	27.00	RD 44x1/6"					
ISO DN20	0111 2020 0000 0301	26.90	23.70	43.00	27.00	RD 52x1/6"					
ISO DN25	0111 2025 0000 0301	33.70	29.70	48.00	32.00	RD 58x1/6"					
ISO DN32	0111 2032 0000 0301	42.40	38.40	48.00	32.00	RD 65x1/6"					
ISO DN40	0111 2040 0000 0301	48.30	44.30	49.00	31.00	RD 78x1/6"					
ISO DN50	0111 2050 0000 0301	60.30	56.30	60.00	40.00	RD 95x1/6"					
ISO DN65	0111 2065 0000 0301	76.10	72.10	64.00	40.00	RD 110x1/4"					
ISO DN80	0111 2080 0000 0301	88.90	84.30	64.00	40.00	RD 130x1/4"					
OD 1/2"	0111 3005 0000 0301	12.70	9.40	41.00	27.00	RD 28x1/8"					
OD 3/4"	0111 3007 0000 0301	19.05	15.75	41.00	27.00	RD 34x1/8"					
OD 1"	0111 3010 0000 0301	25.40	22.10	43.00	26.00	RD 52x1/6"					
OD 1 1/2"	0111 3015 0000 0301	38.10	34.80	48.50	30.00	RD 65x1/6"					
OD 2"	0111 3020 0000 0301	50.80	47.50	48.50	30.00	RD 78x1/6"					
OD 2 1/2"	0111 3025 0000 0301	63.50	60.20	60.00	40.00	RD 95x1/6"					
OD 3"	0111 3030 0000 0301	76.20	72.90	64.00	40.00	RD 110x1/4"					
OD 4"	0111 3040 0000 0301	101.60	97.38	64.00	40.00	RD 130x1/4"					

Available materials:

(Item-no. = 4. Block figure 1-3)

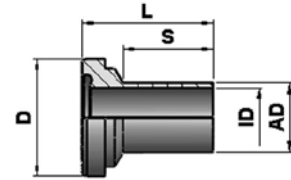
Item-No.	Material
020	1.4404
030	1.4435 BN2
045	1.4539
060	2.4602 Hastelloy
070	Titan Grade 2

Available surface qualities:

(Item-No. = 4. Block figure 4)

Item-No.	Medium contacted surface
0	machined surface Ra<=0,6µm
1	electro polished Ra<=0,5µm
2	electro polished Ra<=0,25µm

Note: Actual data to collect at [www.elpotech.de](http://www.elpotech.de). Specifications and design are subject to change without notice. Date of revision: 05/2018



Aseptik-Bundstutzen

## 1.2.1 ASEPTIC CONNECTION ACCORDING DIN11864-1 FORM A

### 1.2.1.2 ASEPTIC FERRULE MALE

Size	Item number	Pipe AD [mm]	Pipe ID [mm]	Length L [mm]	Length S [mm]	Diam. D [mm]					
DIN DN10	0112 1010 0000 0301	13.00	10.00	41.00	27.00	21.90					
DIN DN15	0112 1015 0000 0301	19.00	16.00	41.00	27.00	27.90					
DIN DN20	0112 1020 0000 0301	23.00	20.00	46.00	26.00	35.90					
DIN DN25	0112 1025 0000 0301	29.00	26.00	46.00	26.00	42.90					
DIN DN32	0112 1032 0000 0301	35.00	32.00	48.00	32.00	48.90					
DIN DN40	0112 1040 0000 0301	41.00	38.00	48.00	31.00	54.90					
DIN DN50	0112 1050 0000 0301	53.00	50.00	48.00	30.00	66.90					
DIN DN65	0112 1065 0000 0301	70.00	66.00	60.00	40.00	84.90					
DIN DN80	0112 1080 0000 0301	85.00	81.00	64.00	40.00	98.90					
DIN DN100	0112 1100 0000 0301	104.00	100.00	64.00	40.00	118.90					
ISO DN08	0112 2008 0000 0301	13.50	10.30	41.00	27.00	21.90					
ISO DN10	0112 2010 0000 0301	17.20	14.00	41.00	27.00	27.90					
ISO DN15	0112 2015 0000 0301	21.30	18.10	43.00	27.00	35.90					
ISO DN20	0112 2020 0000 0301	26.90	23.70	43.00	27.00	42.90					
ISO DN25	0112 2025 0000 0301	33.70	29.70	48.00	32.00	48.90					
ISO DN32	0112 2032 0000 0301	42.40	38.40	48.00	32.00	54.90					
ISO DN40	0112 2040 0000 0301	48.30	44.30	49.00	31.00	66.90					
ISO DN50	0112 2050 0000 0301	60.30	56.30	60.00	40.00	84.90					
ISO DN65	0112 2065 0000 0301	76.10	72.10	64.00	40.00	98.90					
ISO DN80	0112 2080 0000 0301	88.90	84.30	64.00	40.00	118.90					
OD 1/2"	0112 3005 0000 0301	12.70	9.40	41.00	27.00	21.90					
OD 3/4"	0112 3007 0000 0301	19.05	15.75	41.00	27.00	27.90					
OD 1"	0112 3010 0000 0301	25.40	22.10	43.00	26.00	42.90					
OD 1 1/2"	0112 3015 0000 0301	38.10	34.80	48.50	30.00	54.90					
OD 2"	0112 3020 0000 0301	50.80	47.50	47.50	30.00	66.90					
OD 2 1/2"	0112 3025 0000 0301	63.50	60.20	60.00	40.00	84.90					
OD 3"	0112 3030 0000 0301	76.20	72.90	64.00	40.00	98.90					
OD 4"	0112 3040 0000 0301	101.60	97.38	64.00	40.00	118.90					

Available materials:

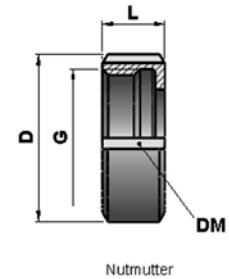
(Item-no. = 4. Block figure 1-3)

Item-No.	Material
020	1.4404
030	1.4435 BN2
045	1.4539
060	2.4602 Hastelloy
070	Titan Grade 2

Available surface qualities:

(Item-No. = 4. Block figure 4)

Item-No.	Medium contacted surface
0	machined surface Ra<=0,6µm
1	electro polished Ra<=0,5µm
2	electro polished Ra<=0,25µm



## 1.2.1 ASEPTIC CONNECTION ACCORDING DIN11864-1 FORM A

### 1.2.1.3 UNION NUT

Size	Item number	Length L [mm]	Diam. D [mm]	Thread G [mm]	Wrench DM* [mm]						
DIN DN10 ISO DN08 OD 1/2"	0113 1010 0000 0111	18.00	38.00	RD 28x1/8"	DM 32						
DIN DN15 ISO DN10 OD 3/4"	0113 1015 0000 0111	18.00	44.00	RD 34x1/8"	DM 38						
DIN DN20 ISO DN15	0113 1020 0000 0111	20.00	54.00	RD 44x1/6"	DM 48						
DIN DN25 ISO DN20 OD 1"	0113 1025 0000 0111	21.00	63.00	RD 52x1/6"	DM 56						
DIN DN32 ISO DN25	0113 1032 0000 0111	21.00	70.00	RD 58x1/6"	DM 62						
DIN DN40 ISO DN32 OD 1 1/2"	0113 1040 0000 0111	21.00	78.00	RD 65x1/6"	DM 74						
DIN DN50 ISO DN40 OD 2"	0113 1050 0000 0111	22.00	92.00	RD 78x1/6"	DM 84						
DIN DN65 ISO DN50 OD 2 1/2"	0113 1065 0000 0111	23.00	112.00	RD 95x1/6"	DM 102						
DIN DN80 ISO DN65 OD 3"	0113 1080 0000 0111	29.00	127.00	RD 110x1/4"	DM117						
DIN DN100 ISO DN80 OD 4"	0113 1100 0000 0111	31.00	148.00	RD 130x1/4"	DM 138						

\* for hook wrench

Available materials:

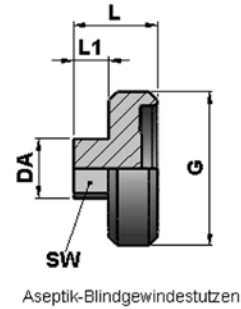
(Item-no. = 4. Block figure 1-3)

Item-No.	Material
010	1.4301
011	1.4305

Available surface qualities:

(Item-No. = 4. Block figure 4)

Item-No.	Medium contacted surface
0	Not electro polished Ra<=1,6µm
1	Electro polished Ra<=1,6µm



## 1.2.1 ASEPTIC CONNECTION ACCORDING DIN11864-1 FORM A

### 1.2.1.4 ASEPTIC FEMALE END CAP

Size	Item number	Length L [mm]	Length L1 [mm]	Diam.. DA [mm]	Thread G [mm]	Wrench SW [mm]				
DIN DN10	0114 1010 0000 0301	20.00	8.00	21.00	RD 28x1/8"	17				
DIN DN15	0114 1015 0000 0301	20.00	8.00	25.00	RD 34x1/8"	22				
DIN DN20	0114 1020 0000 0301	22.00	8.00	35.00	RD 44x1/6"	32				
DIN DN25	0114 1025 0000 0301	24.00	10.0	44.00	RD 52x1/6"	41				
DIN DN32	0114 1032 0000 0301	24.00	10.0	45.00	RD 58x1/6"	41				
DIN DN40	0114 1040 0000 0301	24.00	10.0	60.00	RD 65x1/6"	55				
DIN DN50	0114 1050 0000 0301	24.00	10.0	72.00	RD 78x1/6"	65				
DIN DN65	0114 1065 0000 0301	28.00	12.0	87.00	RD 95x1/6"	80				
DIN DN80	0114 1080 0000 0301	28.00	8.00	100.0	RD 110x1/4"	95				
DIN DN100	0114 1100 0000 0301	30.00	10.0	120.0	RD 130x1/4"	115				
ISO DN08	0114 2008 0000 0301	18.00	6.00	21.00	RD 28x1/8"	17				
ISO DN10	0114 2010 0000 0301	20.00	8.00	25.00	RD 34x1/8"	22				
ISO DN15	0114 2015 0000 0301	22.00	8.00	35.00	RD 44x1/6"	32				
ISO DN20	0114 2020 0000 0301	24.00	10.0	44.00	RD 52x1/6"	41				
ISO DN25	0114 2025 0000 0301	24.00	10.0	45.00	RD 58x1/6"	41				
ISO DN32	0114 2032 0000 0301	24.00	10.0	54.00	RD 65x1/6"	50				
ISO DN40	0114 2040 0000 0301	24.00	10.0	72.00	RD 78x1/6"	65				
ISO DN50	0114 2050 0000 0301	28.00	12.0	87.00	RD 95x1/6"	80				
ISO DN65	0114 2065 0000 0301	28.00	8.00	100.0	RD 110x1/4"	95				
ISO DN80	0114 2080 0000 0301	30.00	10.0	120.0	RD 130x1/4"	115				
OD 1/2"	0114 3005 0000 0301	20.00	8.00	21.00	RD 28x1/8"	17				
OD 3/4"	0114 3007 0000 0301	20.00	8.00	25.00	RD 34x1/8"	22				
OD 1"	0114 3010 0000 0301	24.00	10.0	44.00	RD 52x1/6"	41				
OD 1 1/2"	0114 3015 0000 0301	24.00	10.0	60.00	RD 65x1/6"	55				
OD 2"	0114 3015 0000 0301	24.00	10.0	72.00	RD 78x1/6"	65				
OD 2 1/2"	0114 3025 0000 0301	28.00	12.0	87.00	RD 95x1/6"	80				
OD 3"	0114 3030 0000 0301	28.00	8.00	100.0	RD 110x1/4"	95				
OD 4"	0114 3040 0000 0301	30.00	10.0	120.0	RD 130x1/4"	115				

Available materials:

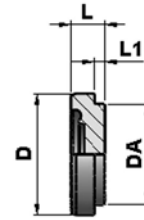
(Item-no. = 4. Block figure 1-3)

Item-No.	Material
020	1.4404
030	1.4435 BN2
045	1.4539
060	2.4602 Hastelloy
070	Titan Grade 2

Available surface qualities:

(Item-No. = 4. Block figure 4)

Item-No.	Medium contacted surface
0	machined surface Ra<=0,6µm
1	electro polished Ra<=0,5µm
2	electro polished Ra<=0,25µm



Aseptik-Blindbündstutzen

## 1.2.1 ASEPTIC CONNECTION ACCORDING DIN11864-1 FORM A

### 1.2.1.5 ASEPTIC MALE END CAP

Size	Item number	Pipe AD [mm]	Pipe ID [mm]	Length L [mm]	Length S [mm]						
DIN DN10	0115 1010 0000 0301	9.00	3.00	21.90	18.00						
DIN DN15	0115 1015 0000 0301	9.00	3.00	27.90	24.00						
DIN DN20	0115 1020 0000 0301	10.00	3.00	35.90	30.00						
DIN DN25	0115 1025 0000 0301	12.00	3.00	42.90	35.00						
DIN DN32	0115 1032 0000 0301	13.00	3.00	48.90	41.00						
DIN DN40	0115 1040 0000 0301	13.00	3.00	54.90	48.00						
DIN DN50	0115 1050 0000 0301	14.00	3.00	66.90	61.00						
DIN DN65	0115 1065 0000 0301	16.00	4.00	84.90	79.00						
DIN DN80	0115 1080 0000 0301	16.00	4.00	98.90	93.00						
DIN DN100	0115 1100 0000 0301	20.00	5.00	118.90	114.00						
ISO DN08	0115 2008 0000 0301	9.00	3.00	21.90	18.00						
ISO DN10	0115 2010 0000 0301	9.00	3.00	27.90	24.00						
ISO DN15	0115 2015 0000 0301	10.00	3.00	35.90	30.00						
ISO DN20	0115 2020 0000 0301	12.00	3.00	42.90	35.00						
ISO DN25	0115 2025 0000 0301	13.00	3.00	48.90	41.00						
ISO DN32	0115 2032 0000 0301	13.00	3.00	54.90	48.00						
ISO DN40	0115 2040 0000 0301	14.00	3.00	66.90	61.00						
ISO DN50	0115 2050 0000 0301	16.00	4.00	84.90	79.00						
ISO DN65	0115 2065 0000 0301	16.00	4.00	98.90	93.00						
ISO DN80	0115 2080 0000 0301	20.00	5.00	118.90	114.00						
OD 1/2"	0115 3005 0000 0301	9.00	3.00	21.90	18.00						
OD 3/4"	0115 3007 0000 0301	9.00	3.00	27.90	24.00						
OD 1"	0115 3010 0000 0301	12.00	3.00	42.90	35.00						
OD 1 1/2"	0115 3015 0000 0301	13.00	3.00	54.90	48.00						
OD 2"	0115 3020 0000 0301	15.00	3.00	66.90	61.00						
OD 2 1/2"	0115 3025 0000 0301	16.00	4.00	84.90	79.00						
OD 3"	0115 3030 0000 0301	16.00	4.00	98.90	93.00						
OD 4"	0115 3040 0000 0301	20.00	5.00	118.90	114.00						

Available materials:

(Item-no. = 4. Block figure 1-3)

Item-No.	Material
020	1.4404
030	1.4435 BN2
045	1.4539
060	2.4602 Hastelloy
070	Titan

Available surface qualities:

(Item-No. = 4. Block figure 4)

Item-No.	Medium contacted surface
0	machined surface Ra<=0,6µm
1	electro polished Ra<=0,5µm
2	electro polished Ra<=0,25µm



O-Ring

## 1.2.1 ASEPTIC CONNECTION ACCORDING DIN11864-1 FORM A

### 1.2.1.6 GASKET

Size	Item number											
DIN DN10	0193 1010 0000 1000											
DIN DN15	0193 1015 0000 1000											
DIN DN20	0193 1020 0000 1000											
DIN DN25	0193 1025 0000 1000											
DIN DN32	0193 1032 0000 1000											
DIN DN40	0193 1040 0000 1000											
DIN DN50	0193 1050 0000 1000											
DIN DN65	0193 1065 0000 1000											
DIN DN80	0193 1080 0000 1000											
DIN DN100	0193 1100 0000 1000											
DIN DN125	0193 1125 0000 1000											
DIN DN150	0193 1150 0000 1000											
ISO DN08	0193 2008 0000 1000											
ISO DN10	0193 2010 0000 1000											
ISO DN15	0193 2015 0000 1000											
ISO DN20	0193 2020 0000 1000											
ISO DN25	0193 2025 0000 1000											
ISO DN32	0193 2032 0000 1000											
ISO DN40	0193 2040 0000 1000											
ISO DN50	0193 2050 0000 1000											
ISO DN65	0193 2065 0000 1000											
ISO DN80	0193 2080 0000 1000											
ISO DN100	0193 2100 0000 1000											
OD 3/4"	0193 3007 0000 1000											
OD 1"	0193 3010 0000 1000											
OD 1 1/2"	0193 3015 0000 1000											
OD 2"	0193 3020 0000 1000											
OD 2 1/2"	0193 3025 0000 1000											
OD 3"	0193 3030 0000 1000											
OD 4"	0193 3040 0000 1000											

Available materials:

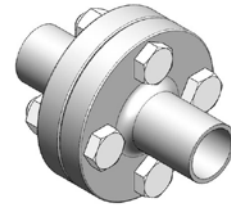
(Item-no. = 4. Block figure 1-4)

Artikel-Nr.	Werkstoff
1000	EPDM
1010	PTFE
1020	FKM (Viton)
1030	Silikon

Note: Actual data to collect at [www.elpotech.de](http://www.elpotech.de). Specifications and design are subject to change without notice. Date of revision: 05/2018

elpotech GmbH & Co. KG | Max-Eyth-Straße 1 | D-71691 Freiberg a.N. | Tel. +49 (0) 7141-68 87 49 0 | Fax +49 (0) 7141-68 87 49 44 | [info@elpotech.de](mailto:info@elpotech.de) | [www.elpotech.de](http://www.elpotech.de)

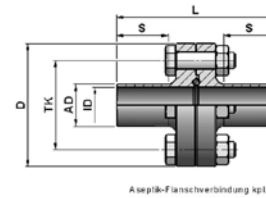




## 1.2.2 ASEPTIC FLANGE CONNECTION ACC. DIN11864-2 FORM A

### TECHNICAL DATA

<b>Standard sizes</b>	<ul style="list-style-type: none"> <li>• DIN DN010 - DIN DN150</li> <li>• ISO DN08 - ISO DN100</li> <li>• OD 1/2" - 4"</li> </ul>
<b>Material</b>	<p>Medium contacted:</p> <ul style="list-style-type: none"> <li>• Ws. 1.4404 (316L)</li> <li>• Ws. 14435 BN2 (316L)</li> <li>• Special materials e.g. 1.4539, Hastelloy 2.4602, Titan etc. on request</li> </ul> <p>Non medium contacted:</p> <ul style="list-style-type: none"> <li>• 1.4301/1.4305 or equivalent</li> </ul>
<b>Gasket</b>	<p>Standard gaskets:</p> <ul style="list-style-type: none"> <li>• EPDM</li> <li>• Special materials on request</li> </ul>
<b>Surface quality</b>	<p>Medium contacted:</p> <ul style="list-style-type: none"> <li>• machined surface Ra &lt; 0,6µm</li> <li>• elektro polished Ra &lt; 0,5µm</li> <li>• elektro polished Ra &lt; 0,25µm</li> <li>• other qualities on request</li> </ul> <p>Non medium contacted:</p> <ul style="list-style-type: none"> <li>• elektro polished Ra &gt; 1,6µm</li> </ul>
<b>Tracability</b>	Medium contacted material marked with material number and heat number
<b>Media</b>	Gases and liquids
<b>Operating temperature</b>	-10°C to +140°C See temperature resistance chart of gaskets
<b>Operating pressure</b>	<ul style="list-style-type: none"> <li>• DIN DN10 – DIN DN40 = 25 bar</li> <li>• DIN DN50 – DIN DN100 = 16 bar</li> <li>• DIN DN125 – DIN DN150 = 10 bar</li> <li>• ISO DN06 – DN25 = 25 bar</li> <li>• ISO DN32 – DN80 = 16 bar</li> <li>• ISO DN100 = 10 bar</li> <li>• OD 1/2" – 1 1/2" = 25 bar</li> <li>• OD 2" – 4" = 16 bar</li> </ul>
<b>Operating temperature gaskets</b>	• EPDM: -40°C to 90°C, temporary to +150°C
<b>Applicable standards</b>	<p>Pipe dimensions:</p> <ul style="list-style-type: none"> <li>• DIN (DIN11866 dimension series A)</li> <li>• ISO (DIN11866 dimension series B)</li> <li>• OD (DIN11866 dimension series C)</li> </ul>
<b>Labelling</b>	<p>Ferrule etc.: company name, item number, size,, material, heat number</p> <p>Gasket: no labelling</p>
<b>Certification</b>	<p>Medium contacted:</p> <ul style="list-style-type: none"> <li>• EN 10204 / 3.1</li> </ul> <p>Medium contacted gaskets:</p> <ul style="list-style-type: none"> <li>• FDA-conform, USP-Class VI, TSE-free according to selected gasket material or Customer preference</li> </ul>



## 1.2.2 ASEPTIC FLANGE CONNECTION ACC. DIN11864-2 FORM A

### 1.2.2.0 ASEPTIC FLANGE CONNECTION COMPLETE

Size	Item number	Pipe AD [mm]	Pipe ID [mm]	Length L [mm]	Length S [mm]	Diam. D [mm]	Diam.. TK [mm]	Screw [Typ]	Screw [Quant]	Nut [Typ]
DIN DN10	0120 1010 0000 0301	13.00	10.00	80.00	26.00	54.00	37.00	M8x30	4	M8
DIN DN15	0120 1015 0000 0301	19.00	16.00	80.00	26.00	59.00	42.00	M8x30	4	M8
DIN DN20	0120 1020 0000 0301	23.00	20.00	80.00	26.00	64.00	47.00	M8x30	4	M8
DIN DN25	0120 1025 0000 0301	29.00	26.00	80.00	26.00	70.00	53.00	M8x30	4	M8
DIN DN32	0120 1032 0000 0301	35.00	32.00	90.00	31.00	76.00	59.00	M8x30	4	M8
DIN DN40	0120 1040 0000 0301	41.00	38.00	90.00	31.00	82.00	65.00	M8x30	4	M8
DIN DN50	0120 1050 0000 0301	53.00	50.00	90.00	31.00	94.00	77.00	M8x30	4	M8
DIN DN65	0120 1065 0000 0301	70.00	66.00	108.00	42.00	113.00	95.00	M8x30	8	M8
DIN DN80	0120 1080 0000 0301	85.00	81.00	116.00	42.00	133.00	112.00	M10x35	8	M10
DIN DN100	0120 1100 0000 0301	104.00	100.00	116.00	42.00	159.00	137.00	M10x40	8	M10
DIN DN125	0120 1125 0000 0301	129.00	125.00	120.00	42.00	183.00	161.00	M10x40	8	M10
DIN DN150	0120 1150 0000 0301	154.00	150.00	120.00	40.00	213.00	188.00	M12x50	8	M12
ISO DN08	0120 2008 0000 0301	13.50	10.30	80.00	26.00	54.00	37.00	M8x30	4	M8
ISO DN10	0120 2010 0000 0301	17.20	14.00	80.00	26.00	59.00	42.00	M8x30	4	M8
ISO DN15	0120 2015 0000 0301	21.30	18.10	80.00	26.00	62.00	45.00	M8x30	4	M8
ISO DN20	0120 2020 0000 0301	26.90	23.70	90.00	31.00	69.00	52.00	M8x30	4	M8
ISO DN25	0120 2025 0000 0301	33.70	29.70	90.00	31.00	74.00	57.00	M8x30	4	M8
ISO DN32	0120 2032 0000 0301	42.40	38.40	90.00	31.00	82.00	65.00	M8x30	4	M8
ISO DN40	0120 2040 0000 0301	48.30	44.30	90.00	31.00	88.00	71.00	M8x30	4	M8
ISO DN50	0120 2050 0000 0301	60.30	56.30	108.00	42.00	103.00	85.00	M8x30	4	M8
ISO DN65	0120 2065 0000 0301	76.10	72.10	112.00	42.00	125.00	104.00	M10x30	8	M10
ISO DN80	0120 2080 0000 0301	88.90	84.30	120.00	42.00	137.00	116.00	M10x35	8	M10
ISO DN100	0120 2100 0000 0301	114.30	109.70	120.00	42.00	168.00	146.00	M10x40	8	M10
OD 1/2"	0120 3005 0000 0301	12.70	9.40	80.00	26.00	54.00	37.00	M8x30	4	M8
OD 3/4"	0120 3007 0000 0301	19.05	15.75	80.00	26.00	59.00	42.00	M8x30	4	M8
OD 1"	0120 3010 0000 0301	25.40	22.10	80.88	26.00	66.00	49.00	M8x30	4	M8
OD 1 1/2"	0120 3015 0000 0301	38.10	34.80	90.00	31.00	79.00	62.00	M8x30	4	M8
OD 2"	0120 3020 0000 0301	50.80	47.50	90.00	31.00	92.00	75.00	M8x30	4	M8
OD 2 1/2"	0120 3025 0000 0301	63.50	60.20	108.00	42.00	107.00	89.00	M8x30	8	M8
OD 3"	0120 3030 0000 0301	76.20	72.90	112.00	42.00	125.00	104.00	M10x30	8	M10
OD 4"	0120 3040 0000 0301	101.60	97.38	116.00	42.00	157.00	135.00	M10x35	8	M10

Available materials:

(Item-no. = 4. Block figure 1-3)

Item-No.	Material
020	1.4404
030	1.4435 BN2
045	1.4539
060	2.4602 Hastelloy
070	Titan Grade 2

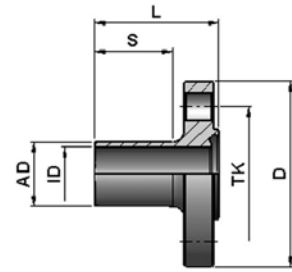
Available surface qualities:

(Item-No. = 4. Block figure 4)

Item-No.	Medium contacted surface
0	machined surface Ra<=0,6µm
1	electro polished Ra<=0,5µm
2	electro polished Ra<=0,25µm

Note: Actual data to collect at [www.elpotech.de](http://www.elpotech.de). Specifications and design are subject to change without notice. Date of revision: 05/2018

elpotech GmbH & Co. KG | Max-Eyth-Straße 1 | D-71691 Freiberg a.N. | Tel. +49 (0) 7141-68 87 49 0 | Fax +49 (0) 7141-68 87 49 44 | info@elpotech.de | [www.elpotech.de](http://www.elpotech.de)



Aseptik-Nutflansch

## 1.2.2 ASEPTIC FLANGE CONNECTION ACC. DIN11864-2 FORM A

### 1.2.2.1 ASEPTIC FLANGE UNION FEMALE

Size	Item number	Pipe AD [mm]	Pipe ID [mm]	Length L [mm]	Length S [mm]	Diam. D [mm]	Diam. TK [mm]	Srew [Quant]			
DIN DN10	0121 1010 0000 0301	13.00	10.00	41.50	26.00	54.00	37.00	4			
DIN DN15	0121 1015 0000 0301	19.00	16.00	41.50	26.00	59.00	42.00	4			
DIN DN20	0121 1020 0000 0301	23.00	20.00	41.50	26.00	64.00	47.00	4			
DIN DN25	0121 1025 0000 0301	29.00	26.00	41.50	26.00	70.00	53.00	4			
DIN DN32	0121 1032 0000 0301	35.00	32.00	46.50	31.00	76.00	59.00	4			
DIN DN40	0121 1040 0000 0301	41.00	38.00	46.50	31.00	82.00	65.00	4			
DIN DN50	0121 1050 0000 0301	53.00	50.00	46.50	31.00	94.00	77.00	4			
DIN DN65	0121 1065 0000 0301	70.00	66.00	55.50	42.00	113.00	95.00	8			
DIN DN80	0121 1080 0000 0301	85.00	81.00	59.50	42.00	133.00	112.00	8			
DIN DN100	0121 1100 0000 0301	104.00	100.00	59.50	42.00	159.00	137.00	8			
DIN DN125	0121 1125 0000 0301	129.00	125.00	61.50	42.00	183.00	161.00	8			
DIN DN150	0121 1150 0000 0301	154.00	150.00	61.50	40.00	213.00	188.00	8			
ISO DN08	0121 2008 0000 0301	13.50	10.30	41.50	26.00	54.00	37.00	4			
ISO DN10	0121 2010 0000 0301	17.20	14.00	41.50	26.00	59.00	42.00	4			
ISO DN15	0121 2015 0000 0301	21.30	18.10	41.50	26.00	62.00	45.00	4			
ISO DN20	0121 2020 0000 0301	26.90	23.70	41.50	26.00	69.00	52.00	4			
ISO DN25	0121 2025 0000 0301	33.70	29.70	46.50	31.00	74.00	57.00	4			
ISO DN32	0121 2032 0000 0301	42.40	38.40	46.50	31.00	82.00	65.00	4			
ISO DN40	0121 2040 0000 0301	48.30	44.30	46.50	31.00	88.00	71.00	4			
ISO DN50	0121 2050 0000 0301	60.30	56.30	55.50	42.00	103.00	85.00	4			
ISO DN65	0121 2065 0000 0301	76.10	72.10	57.50	42.00	125.00	104.00	8			
ISO DN80	0121 2080 0000 0301	88.90	84.30	59.50	42.00	137.00	116.00	8			
ISO DN100	0121 2100 0000 0301	114.30	109.70	59.50	42.00	168.00	146.00	8			
OD 1/2"	0121 3005 0000 0301	12.70	9.40	41.50	26.00	54.00	37.00	4			
OD 3/4"	0121 3007 0000 0301	19.05	15.75	41.50	26.00	59.00	42.00	4			
OD 1"	0121 3010 0000 0301	25.40	22.10	41.50	26.00	66.00	49.00	4			
OD 1 1/2"	0121 3015 0000 0301	38.10	34.80	46.50	31.00	79.00	62.00	4			
OD 2"	0121 3020 0000 0301	50.80	47.50	46.50	31.00	92.00	75.00	4			
OD 2 1/2"	0121 3025 0000 0301	63.50	60.20	55.50	42.00	107.00	89.00	8			
OD 3"	0121 3030 0000 0301	76.20	72.90	57.50	42.00	125.00	104.00	8			
OD 4"	0121 3040 0000 0301	101.60	97.38	59.50	42.00	157.00	135.00	8			

Available materials:

(Item-no. = 4. Block figure 1-3)

Item-No.	Material
020	1.4404
030	1.4435 BN2
045	1.4539
060	2.4602 Hastelloy
070	Titan Grade 2

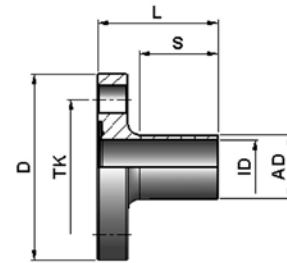
Available surface qualities:

(Item-No. = 4. Block figure 4)

Item-No.	Medium contacted surface
0	machined surface Ra<=0,6µm
1	electro polished Ra<=0,5µm
2	electro polished Ra<=0,25µm

Note: Actual data to collect at [www.elpotech.de](http://www.elpotech.de). Specifications and design are subject to change without notice. Date of revision: 05/2018

elpotech GmbH & Co. KG | Max-Eyth-Straße 1 | D-71691 Freiberg a.N. | Tel. +49 (0) 7141-68 87 49 0 | Fax +49 (0) 7141-68 87 49 44 | info@elpotech.de | [www.elpotech.de](http://www.elpotech.de)



Aseptik-Bundflansch

## 1.2.2 ASEPTIC FLANGE CONNECTION ACC. DIN11864-2 FORM A

### 1.2.2.2 ASEPTIC FLANGE UNION MALE

Size	Item number	Pipe AD [mm]	Pipe ID [mm]	Length L [mm]	Length S [mm]	Diam. D [mm]	Diam. TK [mm]	Srew [Quant]			
DIN DN10	0122 1010 0000 0301	13.00	10.00	40.00	26.00	54.00	37.00	4			
DIN DN15	0122 1015 0000 0301	19.00	16.00	40.00	26.00	59.00	42.00	4			
DIN DN20	0122 1020 0000 0301	23.00	20.00	40.00	26.00	64.00	47.00	4			
DIN DN25	0122 1025 0000 0301	29.00	26.00	40.00	26.00	70.00	53.00	4			
DIN DN32	0122 1032 0000 0301	35.00	32.00	45.00	31.00	76.00	59.00	4			
DIN DN40	0122 1040 0000 0301	41.00	38.00	45.00	31.00	82.00	65.00	4			
DIN DN50	0122 1050 0000 0301	53.00	50.00	45.00	31.00	94.00	77.00	4			
DIN DN65	0122 1065 0000 0301	70.00	66.00	54.00	42.00	113.00	95.00	8			
DIN DN80	0122 1080 0000 0301	85.00	81.00	58.00	42.00	133.00	112.00	8			
DIN DN100	0122 1100 0000 0301	104.00	100.00	58.00	42.00	159.00	137.00	8			
DIN DN125	0122 1125 0000 0301	129.00	125.00	60.00	42.00	183.00	161.00	8			
DIN DN150	0122 1150 0000 0301	154.00	150.00	60.00	40.00	213.00	188.00	8			
ISO DN08	0122 2008 0000 0301	13.50	10.30	40.00	26.00	54.00	37.00	4			
ISO DN10	0122 2010 0000 0301	17.20	14.00	40.00	26.00	59.00	42.00	4			
ISO DN15	0122 2015 0000 0301	21.30	18.10	40.00	26.00	62.00	45.00	4			
ISO DN20	0122 2020 0000 0301	26.90	23.70	40.00	26.00	69.00	52.00	4			
ISO DN25	0122 2025 0000 0301	33.70	29.70	45.00	31.00	74.00	57.00	4			
ISO DN32	0122 2032 0000 0301	42.40	38.40	45.00	31.00	82.00	65.00	4			
ISO DN40	0122 2040 0000 0301	48.30	44.30	45.00	31.00	88.00	71.00	4			
ISO DN50	0122 2050 0000 0301	60.30	56.30	54.00	42.00	103.00	85.00	4			
ISO DN65	0122 2065 0000 0301	76.10	72.10	56.00	42.00	125.00	104.00	8			
ISO DN80	0122 2080 0000 0301	88.90	84.30	58.00	42.00	137.00	116.00	8			
ISO DN100	0122 2100 0000 0301	114.30	109.70	58.00	42.00	168.00	146.00	8			
OD 1/2"	0122 3005 0000 0301	12.70	9.40	40.00	26.00	54.00	37.00	4			
OD 3/4"	0122 3007 0000 0301	19.05	15.75	40.00	26.00	59.00	42.00	4			
OD 1"	0122 3010 0000 0301	25.40	22.10	40.00	26.00	66.00	49.00	4			
OD 1 1/2"	0122 3015 0000 0301	38.10	34.80	45.00	31.00	79.00	62.00	4			
OD 2"	0122 3020 0000 0301	50.80	47.50	45.00	31.00	92.00	75.00	4			
OD 2 1/2"	0122 3025 0000 0301	63.50	60.20	54.00	42.00	107.00	89.00	8			
OD 3"	0122 3030 0000 0301	76.20	72.90	56.00	42.00	125.00	104.00	8			
OD 4"	0122 3040 0000 0301	101.60	97.38	58.00	42.00	157.00	135.00	8			

Available materials:

(Item-no. = 4. Block figure 1-3)

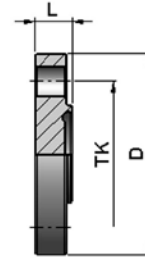
Item-No.	Material
020	1.4404
030	1.4435 BN2
045	1.4539
060	2.4602 Hastelloy
070	Titan Grade 2

Available surface qualities:

(Item-No. = 4. Block figure 4)

Item-No.	Medium contacted surface
0	machined surface Ra<=0,6µm
1	electro polished Ra<=0,5µm
2	electro polished Ra<=0,25µm

Note: Actual data to collect at [www.elpotech.de](http://www.elpotech.de). Specifications and design are subject to change without notice. Date of revision: 05/2018



Aseptik-Blindnutflansch

## 1.2.2 ASEPTIC FLANGE CONNECTION ACC. DIN11864-2 FORM A

### 1.2.2.3 ASEPTIC FLANGE COVER FEMALE

Size	Item number	Length L [mm]	Diam. D [mm]	Diam. TK [mm]	Screw [Quant]						
DIN DN10	0123 1010 0000 0301	11.50	54.00	37.00	4						
DIN DN15	0123 1015 0000 0301	11.50	59.00	42.00	4						
DIN DN20	0123 1020 0000 0301	11.50	64.00	47.00	4						
DIN DN25	0123 1025 0000 0301	11.50	70.00	53.00	4						
DIN DN32	0123 1032 0000 0301	11.50	76.00	59.00	4						
DIN DN40	0123 1040 0000 0301	11.50	82.00	65.00	4						
DIN DN50	0123 1050 0000 0301	11.50	94.00	77.00	4						
DIN DN65	0123 1065 0000 0301	11.50	113.00	95.00	8						
DIN DN80	0123 1080 0000 0301	13.50	133.00	112.00	8						
DIN DN100	0123 1100 0000 0301	15.50	159.00	137.00	8						
DIN DN125	0123 1125 0000 0301	15.50	183.00	161.00	8						
DIN DN150	0123 1150 0000 0301	17.50	213.00	188.00	8						
ISO DN08	0123 2008 0000 0301	11.50	54.00	37.00	4						
ISO DN10	0123 2010 0000 0301	11.50	59.00	42.00	4						
ISO DN15	0123 2015 0000 0301	11.50	62.00	45.00	4						
ISO DN20	0123 2020 0000 0301	11.50	69.00	52.00	4						
ISO DN25	0123 2025 0000 0301	11.50	74.00	57.00	4						
ISO DN32	0123 2032 0000 0301	11.50	82.00	65.00	4						
ISO DN40	0123 2040 0000 0301	11.50	88.00	71.00	4						
ISO DN50	0123 2050 0000 0301	11.50	103.00	85.00	4						
ISO DN65	0123 2065 0000 0301	13.50	125.00	104.00	8						
ISO DN80	0123 2080 0000 0301	13.50	137.00	116.00	8						
ISO DN100	0123 2100 0000 0301	15.50	168.00	146.00	8						
OD 1/2"	0123 3005 0000 0301	11.50	54.00	37.00	4						
OD 3/4"	0123 3007 0000 0301	11.50	59.00	42.00	4						
OD 1"	0123 3010 0000 0301	11.50	66.00	49.00	4						
OD 1 1/2"	0123 3015 0000 0301	11.50	79.00	62.00	4						
OD 2"	0123 3020 0000 0301	11.50	92.00	75.00	4						
OD 2 1/2"	0123 3025 0000 0301	11.50	107.00	89.00	8						
OD 3"	0123 3030 0000 0301	13.50	125.00	104.00	8						
OD 4"	0123 3040 0000 0301	15.50	157.00	135.00	8						

Available materials:

(Item-no. = 4. Block figure 1-3)

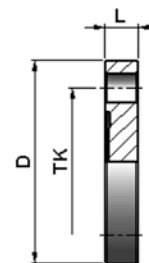
Item-No.	Material
020	1.4404
030	1.4435 BN2
045	1.4539
060	2.4602 Hastelloy
070	Titan Grade 2

Available surface qualities:

(Item-No. = 4. Block figure 4)

Item-No.	Medium contacted surface
0	machined surface Ra<=0,6µm
1	electro polished Ra<=0,5µm
2	electro polished Ra<=0,25µm

Note: Actual data to collect at [www.elpotech.de](http://www.elpotech.de). Specifications and design are subject to change without notice. Date of revision: 05/2018



Aseptik-Blindbündflansch

## 1.2.2 ASEPTIC FLANGE CONNECTION ACC. DIN11864-2 FORM A

### 1.2.2.4 ASEPTIC FLANGE COVER MALE

Size	Item number	Length L [mm]	Diam. D [mm]	Diam. [mm]	Screw [Quant]						
DIN DN10	0124 1010 0000 0301	10.00	54.00	37.00	4						
DIN DN15	0124 1015 0000 0301	10.00	59.00	42.00	4						
DIN DN20	0124 1020 0000 0301	10.00	64.00	47.00	4						
DIN DN25	0124 1025 0000 0301	10.00	70.00	53.00	4						
DIN DN32	0124 1032 0000 0301	10.00	76.00	59.00	4						
DIN DN40	0124 1040 0000 0301	10.00	82.00	65.00	4						
DIN DN50	0124 1050 0000 0301	10.00	94.00	77.00	4						
DIN DN65	0124 1065 0000 0301	10.00	113.00	95.00	8						
DIN DN80	0124 1080 0000 0301	12.00	133.00	112.00	8						
DIN DN100	0124 1100 0000 0301	14.00	159.00	137.00	8						
DIN DN125	0124 1125 0000 0301	14.00	183.00	161.00	8						
DIN DN150	0124 1150 0000 0301	16.00	213.00	188.00	8						
ISO DN08	0124 2008 0000 0301	10.00	54.00	37.00	4						
ISO DN10	0124 2010 0000 0301	10.00	59.00	42.00	4						
ISO DN15	0124 2015 0000 0301	10.00	62.00	45.00	4						
ISO DN20	0124 2020 0000 0301	10.00	69.00	52.00	4						
ISO DN25	0124 2025 0000 0301	10.00	74.00	57.00	4						
ISO DN32	0124 2032 0000 0301	10.00	82.00	65.00	4						
ISO DN40	0124 2040 0000 0301	10.00	88.00	71.00	4						
ISO DN50	0124 2050 0000 0301	10.00	103.00	85.00	4						
ISO DN65	0124 2065 0000 0301	12.00	125.00	104.00	8						
ISO DN80	0124 2080 0000 0301	12.00	137.00	116.00	8						
ISO DN100	0124 2100 0000 0301	14.00	168.00	146.00	8						
OD 1/2"	0124 3005 0000 0301	10.00	54.00	37.00	4						
OD 3/4"	0124 3007 0000 0301	10.00	59.00	42.00	4						
OD 1"	0124 3010 0000 0301	10.00	66.00	49.00	4						
OD 1 1/2"	0124 3015 0000 0301	10.00	79.00	62.00	4						
OD 2"	0124 3020 0000 0301	10.00	92.00	75.00	4						
OD 2 1/2"	0124 3025 0000 0301	10.00	107.00	89.00	8						
OD 3"	0124 3030 0000 0301	12.00	125.00	104.00	8						
OD 4"	0124 3040 0000 0301	14.00	157.00	135.00	8						

Available materials:

(Item-no. = 4. Block figure 1-3)

Item-No.	Material
020	1.4404
030	1.4435 BN2
045	1.4539
060	2.4602 Hastelloy
070	Titan Grade 2

Available surface qualities:

(Item-No. = 4. Block figure 4)

Item-No.	Medium contacted surface
0	machined surface Ra<=0,6µm
1	electro polished Ra<=0,5µm
2	electro polished Ra<=0,25µm

Note: Actual data to collect at [www.elpotech.de](http://www.elpotech.de). Specifications and design are subject to change without notice. Date of revision: 05/2018



O-Ring

## 1.2.2 ASEPTIC FLANGE CONNECTION ACC. DIN11864-2 FORM A

### 1.2.2.5 GASKET

Size	Item number											
DIN DN10	0193 1010 0000 1000											
DIN DN15	0193 1015 0000 1000											
DIN DN20	0193 1020 0000 1000											
DIN DN25	0193 1025 0000 1000											
DIN DN32	0193 1032 0000 1000											
DIN DN40	0193 1040 0000 1000											
DIN DN50	0193 1050 0000 1000											
DIN DN65	0193 1065 0000 1000											
DIN DN80	0193 1080 0000 1000											
DIN DN100	0193 1100 0000 1000											
DIN DN125	0193 1125 0000 1000											
DIN DN150	0193 1150 0000 1000											
ISO DN08	0193 2008 0000 1000											
ISO DN10	0193 2010 0000 1000											
ISO DN15	0193 2015 0000 1000											
ISO DN20	0193 2020 0000 1000											
ISO DN25	0193 2025 0000 1000											
ISO DN32	0193 2032 0000 1000											
ISO DN40	0193 2040 0000 1000											
ISO DN50	0193 2050 0000 1000											
ISO DN65	0193 2065 0000 1000											
ISO DN80	0193 2080 0000 1000											
ISO DN100	0193 2100 0000 1000											
OD 1/2"	0193 3005 0000 1000											
OD 3/4"	0193 3007 0000 1000											
OD 1"	0193 3010 0000 1000											
OD 1 1/2"	0193 3015 0000 1000											
OD 2"	0193 3020 0000 1000											
OD 2 1/2"	0193 3025 0000 1000											
OD 3"	0193 3030 0000 1000											
OD 4"	0193 3040 0000 1000											

Available materials:

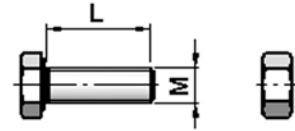
(Item-no. = 4. Block figure 1-4)

Artikel-Nr.	Werkstoff
1000	EPDM
1010	PTFE
1020	FKM (Viton)
1030	Silikon



O-Ring





Anzahl N

Satz Schrauben

## 1.2.2 ASEPTIK FLANGE CONNECTION ACC. DIN11864-2 FORM A

### 1.2.2.6 Screws

Size	Item number.	Thread M [mm]	Screw [Quant]									
DIN DN10	0293 1010 0000 0408	M8x25	4									
DIN DN15	0293 1015 0000 0408	M8x30	4									
DIN DN20	0293 1020 0000 0408	M8x30	4									
DIN DN25	0293 1025 0000 0408	M8x30	4									
DIN DN32	0293 1032 0000 0408	M8x30	4									
DIN DN40	0293 1040 0000 0408	M8x30	4									
DIN DN50	0293 1050 0000 0408	M8x30	4									
DIN DN65	0293 1065 0000 0408	M8x30	8									
DIN DN80	0293 1080 0000 0408	M10x35	8									
DIN DN100	0293 1100 0000 0408	M10x40	8									
DIN DN125	0293 1125 0000 0408	M10x40	8									
DIN DN150	0293 1150 0000 0408	M10x40	8									
ISO DN08	0293 2008 0000 0408	M8x25	4									
ISO DN10	0293 2010 0000 0408	M8x25	4									
ISO DN15	0293 2015 0000 0408	M8x30	4									
ISO DN20	0293 2020 0000 0408	M8x30	4									
ISO DN25	0293 2025 0000 0408	M8x30	4									
ISO DN32	0293 2032 0000 0408	M8x30	4									
ISO DN40	0293 2040 0000 0408	M8x30	4									
ISO DN50	0293 2050 0000 0408	M8x30	4									
ISO DN65	0293 2065 0000 0408	M10x35	8									
ISO DN80	0293 2080 0000 0408	M10x35	8									
ISO DN150	0293 2150 0000 0408	M10x40	8									
OD 1/2"	0293 3005 0000 0408	M8x25	4									
OD 3/4"	0293 3007 0000 0408	M8x25	4									
OD 1"	0293 3010 0000 0408	M8x30	4									
OD 1 1/2"	0293 3015 0000 0408	M8x30	4									
OD 2"	0293 3020 0000 0408	M8x30	4									
OD 2 1/2"	0293 3025 0000 0408	M10x35	8									
OD 3"	0293 3030 0000 0408	M10x35	8									
OD 4"	0293 3040 0000 0408	M10x40	8									

Available material:

(Item-no. = 4. Block figure 1-3)

Item-No.	Material
040	A2-70

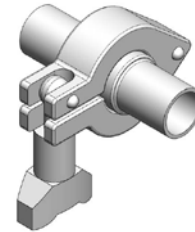
Available surface qualities:

(Item-No. = 4. Block figure 4)

Item-No.	Medium contacted surface
0	machined surface

Note: Actual data to collect at [www.elpotech.de](http://www.elpotech.de). Specifications and design are subject to change without notice. Date of revision: 05/2018

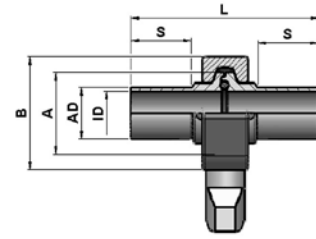
elpotech GmbH & Co. KG | Max-Eyth-Straße 1 | D-71691 Freiberg a.N. | Tel. +49 (0) 7141-68 87 49 0 | Fax +49 (0) 7141-68 87 49 44 | [info@elpotech.de](mailto:info@elpotech.de) | [www.elpotech.de](http://www.elpotech.de)



## 1.2.3 ASEPTIC CLAMP CONNECTION ACC. NACH DIN11864-3 FORM A

### TECHNICAL DATA

<b>Standard sizes</b>	<ul style="list-style-type: none"> <li>• DIN DN010 - DIN DN100</li> <li>• ISO DN08 - ISO DN80</li> <li>• OD 1/2" - 4"</li> </ul>
<b>Material</b>	<p>Medium contacted:</p> <ul style="list-style-type: none"> <li>• Ws. 1.4404 (316L)</li> <li>• Ws. 14435 BN2 (316L)</li> <li>• Special materials e.g. 1.4539, Hastelloy 2.4602, Titan etc. on request</li> </ul> <p>Non medium contacted:</p> <ul style="list-style-type: none"> <li>• 1.4301/1.4305 or equivalent</li> </ul>
<b>Gasket</b>	<p>Standard gaskets:</p> <ul style="list-style-type: none"> <li>• EPDM</li> <li>• Special materials on request</li> </ul>
<b>Surface quality</b>	<p>Medium contacted:</p> <ul style="list-style-type: none"> <li>• machined surface Ra &lt; 0,6µm</li> <li>• elektro polished Ra &lt; 0,5µm</li> <li>• elektro polished Ra &lt; 0,25µm</li> <li>• other qualities on request</li> </ul> <p>Non medium contacted:</p> <ul style="list-style-type: none"> <li>• elektro polished Ra &gt; 1,6µm</li> </ul>
<b>Tracability</b>	Medium contacted material marked with material number and heat number
<b>Media</b>	Gases and liquids
<b>Operating temperature</b>	-10°C bis +140°C See temperature resistance chart of gaskets
<b>Operating pressure</b>	<ul style="list-style-type: none"> <li>• DIN DN10 – DIN DN40 = 40 bar</li> <li>• DIN DN50 – DIN DN65 = 25 bar</li> <li>• DIN DN80 = 16 bar</li> <li>• DIN DN100 = 10 bar</li> <li>• ISO DN08 – DN25 =40 bar</li> <li>• ISO DN32 – DN50 =25 bar</li> <li>• ISO DN65 – DN80 = 16 bar</li> <li>• OD 1/2" – 1 1/2" = 40 bar</li> <li>• OD 2" – 2 1/2" = 25 bar</li> <li>• OD 3 = 16 bar</li> <li>• OD 4 = 10 bar</li> </ul>
<b>Operating temperature gaskets</b>	• EPDM: -40°C bis +90°C, temporary to bis +150°C
<b>Applicable standards</b>	<p>Pipe dimensions:</p> <ul style="list-style-type: none"> <li>• DIN (DIN11866 dimension series A)</li> <li>• ISO (DIN11866 dimension series B)</li> <li>• OD (DIN11866 dimension series C)</li> </ul>
<b>Labelling</b>	<p>Ferrule etc.: company name, item number, size,, material, heat number</p> <p>Gasket: no labelling</p>
<b>Certification</b>	<p>Medium contacted:</p> <ul style="list-style-type: none"> <li>• EN 10204 / 3.1</li> </ul> <p>Medium contacted gaskets:</p> <ul style="list-style-type: none"> <li>• FDA-conform, USP-Class VI, TSE-free according to selected gasket material or Customer preference</li> </ul>



Aseptik-Klemmverbindung Iqpl

## 1.2.3 ASEPTIC CLAMP CONNECTION ACC. DIN11864-3 FORM A

### 1.2.3.0 ASEPTIC CLAMP CONNECTION COMPLETE

Size	Item number	Pipe AD [mm]	Pipe ID [mm]	Length L [mm]	Length S [mm]	Diam. A [mm]	Diam. D [mm]				
DIN DN10	0130 1010 0000 0301	13.00	10.00	76.00	26.00	34.00	70.00				
DIN DN15	0130 1015 0000 0301	19.00	16.00	76.00	26.00	34.00	70.00				
DIN DN20	0130 1020 0000 0301	23.00	20.00	76.00	26.00	50.50	90.00				
DIN DN25	0130 1025 0000 0301	29.00	26.00	77.00	28.00	50.50	90.00				
DIN DN32	0130 1032 0000 0301	35.00	32.00	88.00	30.00	50.50	90.00				
DIN DN40	0130 1040 0000 0301	41.00	38.00	88.00	30.00	64.00	106.00				
DIN DN50	0130 1050 0000 0301	53.00	50.00	89.00	30.00	77.50	120.00				
DIN DN65	0130 1065 0000 0301	70.00	66.00	113.00	40.00	91.00	135.00				
DIN DN80	0130 1080 0000 0301	85.00	81.00	117.00	40.00	106.00	149.00				
DIN DN100	0130 1100 0000 0301	104.00	100.00	120.00	40.00	130.00	180.00				
ISO DN08	0130 2008 0000 0301	13.50	10.30	76.00	26.00	34.00	70.00				
ISO DN10	0130 2010 0000 0301	17.20	14.00	76.00	26.00	34.00	70.00				
ISO DN15	0130 2015 0000 0301	21.30	18.10	78.00	26.00	34.00	70.00				
ISO DN20	0130 2020 0000 0301	26.90	23.70	78.00	30.00	50.50	90.00				
ISO DN25	0130 2025 0000 0301	33.70	29.70	88.00	30.00	50.50	90.00				
ISO DN32	0130 2032 0000 0301	42.40	38.40	88.00	30.00	64.00	106.00				
ISO DN40	0130 2040 0000 0301	48.30	44.30	90.00	30.00	64.00	106.00				
ISO DN50	0130 2050 0000 0301	60.30	56.30	114.00	40.00	91.00	135.00				
ISO DN65	0130 2065 0000 0301	76.10	72.10	117.00	40.00	106.00	149.00				
ISO DN80	0130 2080 0000 0301	88.90	84.30	122.00	40.00	119.00	162.00				
OD 1/2"	0130 3005 0000 0301	12.70	9.40	76.00	26.00	34.00	70.00				
OD 3/4"	0130 3007 0000 0301	19.05	15.75	76.00	26.00	34.00	70.00				
OD 1"	0130 3010 0000 0301	25.40	22.10	77.00	28.00	50.50	90.00				
OD 1 1/2"	0130 3015 0000 0301	38.10	34.80	88.00	30.00	64.00	106.00				
OD 2"	0130 3020 0000 0301	50.80	47.50	89.00	30.00	77.50	92.00				
OD 2 1/2"	0130 3025 0000 0301	63.50	60.20	115.00	40.00	91.00	135.00				
OD 3"	0130 3030 0000 0301	76.20	72.90	117.00	40.00	106.00	149.00				
OD 4"	0130 3040 0000 0301	101.60	97.38	119.00	40.00	130.00	130.00				

Available materials:

(Item-no. = 4. Block figure 1-3)

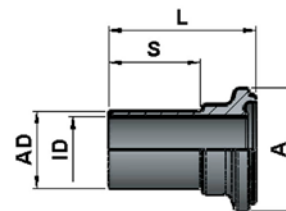
Item-No.	Material
020	1.4404
030	1.4435 BN2
045	1.4539
060	2.4602 Hastelloy
070	Titan Grade 2

Available surface qualities:

(Item-No. = 4. Block figure 4)

Item-No.	Medium contacted surface
0	machined surface Ra<=0,6µm
1	electro polished Ra<=0,5µm
2	electro polished Ra<=0,25µm

Note: Actual data to collect at [www.elpotech.de](http://www.elpotech.de). Specifications and design are subject to change without notice. Date of revision: 05/2018



Aseptik-Nutklemmstutzen

## 1.2.3 ASEPTIC CLAMP CONNECTION ACC. DIN11864-3 FORM A

### 1.2.3.1 ASEPTIC CLAMP FERRULE FEMALE

Size	Item number	Pipe AD [mm]	Pipe ID [mm]	Length L [mm]	Length S [mm]	Diam. A [mm]					
DIN DN10	0131 1010 0000 0301	13.00	10.00	39.50	26.00	34.00					
DIN DN15	0131 1015 0000 0301	19.00	16.00	39.50	26.00	34.00					
DIN DN20	0131 1020 0000 0301	23.00	20.00	39.50	26.00	50.50					
DIN DN25	0131 1025 0000 0301	29.00	26.00	40.00	28.00	50.50					
DIN DN32	0131 1032 0000 0301	35.00	32.00	45.50	30.00	50.50					
DIN DN40	0131 1040 0000 0301	41.00	38.00	45.50	30.00	64.00					
DIN DN50	0131 1050 0000 0301	53.00	50.00	46.00	30.00	77.50					
DIN DN65	0131 1065 0000 0301	70.00	66.00	58.00	40.00	91.00					
DIN DN80	0131 1080 0000 0301	85.00	81.00	60.00	40.00	106.00					
DIN DN100	0131 1100 0000 0301	104.00	100.00	61.50	40.00	130.00					
ISO DN08	0131 2008 0000 0301	13.50	10.30	39.50	26.00	34.00					
ISO DN10	0131 2010 0000 0301	17.20	14.00	39.50	26.00	34.00					
ISO DN15	0131 2015 0000 0301	21.30	18.10	40.50	26.00	34.00					
ISO DN20	0131 2020 0000 0301	26.90	23.70	40.00	30.00	50.50					
ISO DN25	0131 2025 0000 0301	33.70	29.70	45.50	30.00	50.50					
ISO DN32	0131 2032 0000 0301	42.40	38.40	45.50	30.00	64.00					
ISO DN40	0131 2040 0000 0301	48.30	44.30	46.50	30.00	64.00					
ISO DN50	0131 2050 0000 0301	60.30	56.30	58.50	40.00	91.00					
ISO DN65	0131 2065 0000 0301	76.10	72.10	60.00	40.00	106.00					
ISO DN80	0131 2080 0000 0301	88.90	84.30	62.50	40.00	119.00					
OD 1/2"	0131 3005 0000 0301	12.70	9.40	39.50	26.00	34.00					
OD 3/4"	0131 3007 0000 0301	19.05	15.75	39.50	26.00	34.00					
OD 1"	0131 3010 0000 0301	25.40	22.10	40.00	28.00	50.50					
OD 1 1/2"	0131 3015 0000 0301	38.10	34.80	45.50	30.00	64.00					
OD 2"	0131 3020 0000 0301	50.80	47.50	44.20	30.00	77.50					
OD 2 1/2"	0131 3025 0000 0301	63.50	60.20	59.00	40.00	91.00					
OD 3"	0131 3030 0000 0301	76.20	72.90	60.00	40.00	106.00					
OD 4"	0131 3040 0000 0301	101.60	97.38	61.00	40.00	130.00					

Available materials:

(Item-no. = 4. Block figure 1-3)

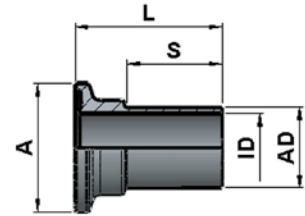
Item-No.	Material
020	1.4404
030	1.4435 BN2
045	1.4539
060	2.4602 Hastelloy
070	Titan Grade 2

Available surface qualities:

(Item-No. = 4. Block figure 4)

Item-No.	Medium contacted surface
0	machined surface Ra<=0,6µm
1	electro polished Ra<=0,5µm
2	electro polished Ra<=0,25µm

Note: Actual data to collect at [www.elpotech.de](http://www.elpotech.de). Specifications and design are subject to change without notice. Date of revision: 05/2018



Aseptik-Bundklemmstutzen

## 1.2.3 ASEPTIC CLAMP CONNECTION ACC. DIN11864-3 FORM A

### 1.2.3.2 ASEPTIC CLAMP FERRULE MALE

Size	Item number	Pipe AD [mm]	Pipe ID [mm]	Length L [mm]	Length S [mm]	Diam. A [mm]					
DIN DN10	0132 1010 0000 0301	13.00	10.00	38.00	26.00	34.00					
DIN DN15	0132 1015 0000 0301	19.00	16.00	38.00	26.00	34.00					
DIN DN20	0132 1020 0000 0301	23.00	20.00	38.00	26.00	50.50					
DIN DN25	0132 1025 0000 0301	29.00	26.00	38.50	28.00	50.50					
DIN DN32	0132 1032 0000 0301	35.00	32.00	44.00	30.00	50.50					
DIN DN40	0132 1040 0000 0301	41.00	38.00	44.00	30.00	64.00					
DIN DN50	0132 1050 0000 0301	53.00	50.00	44.50	30.00	77.50					
DIN DN65	0132 1065 0000 0301	70.00	66.00	56.50	40.00	91.00					
DIN DN80	0132 1080 0000 0301	85.00	81.00	58.50	40.00	106.00					
DIN DN100	0132 1100 0000 0301	104.00	100.00	60.00	40.00	130.00					
ISO DN08	0132 2008 0000 0301	13.50	10.30	38.00	26.00	34.00					
ISO DN10	0132 2010 0000 0301	17.20	14.00	38.00	26.00	34.00					
ISO DN15	0132 2015 0000 0301	21.30	18.10	39.00	26.00	34.00					
ISO DN20	0132 2020 0000 0301	26.90	23.70	39.00	30.00	50.50					
ISO DN25	0132 2025 0000 0301	33.70	29.70	44.00	30.00	50.50					
ISO DN32	0132 2032 0000 0301	42.40	38.40	44.00	30.00	64.00					
ISO DN40	0132 2040 0000 0301	48.30	44.30	45.00	30.00	64.00					
ISO DN50	0132 2050 0000 0301	60.30	56.30	57.00	40.00	91.00					
ISO DN65	0132 2065 0000 0301	76.10	72.10	58.50	40.00	106.00					
ISO DN80	0132 2080 0000 0301	88.90	84.30	61.00	40.00	119.00					
OD 1/2"	0132 3005 0000 0301	12.70	9.40	38.00	26.00	34.00					
OD 3/4"	0132 3007 0000 0301	19.05	15.75	38.00	26.00	34.00					
OD 1"	0132 3010 0000 0301	25.40	22.10	38.50	28.00	50.50					
OD 1 1/2"	0132 3015 0000 0301	38.10	34.80	44.00	30.00	64.00					
OD 2"	0132 3020 0000 0301	50.80	47.50	44.50	30.00	77.50					
OD 2 1/2"	0132 3025 0000 0301	63.50	60.20	57.50	40.00	91.00					
OD 3"	0132 3030 0000 0301	76.20	72.90	58.50	40.00	106.00					
OD 4"	0132 3040 0000 0301	101.60	97.38	59.50	40.00	130.00					

Available materials:

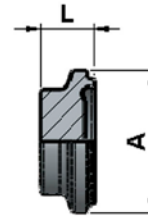
(Item-no. = 4. Block figure 1-3)

Item-No.	Material
020	1.4404
030	1.4435 BN2
045	1.4539
060	2.4602 Hastelloy
070	Titan Grade 2

Available surface qualities:

(Item-No. = 4. Block figure 4)

Item-No.	Medium contacted surface
0	machined surface Ra<=0,6µm
1	electro polished Ra<=0,5µm
2	electro polished Ra<=0,25µm



## 1.2.3 ASEPTIC CLAMP CONNECTION ACC. DIN11864-3 FORM A

### 1.2.3.3 ASEPTIC CLAMP FEMALE END CAP

Size	Item number	Length L [mm]	Diam. A [mm]					
DIN DN10	0133 1010 0000 0301	13.50	34.00					
DIN DN15	0133 1015 0000 0301	13.50	34.00					
DIN DN20	0133 1020 0000 0301	13.50	50.50					
DIN DN25	0133 1025 0000 0301	12.00	50.50					
DIN DN32	0133 1032 0000 0301	15.50	50.50					
DIN DN40	0133 1040 0000 0301	15.50	64.00					
DIN DN50	0133 1050 0000 0301	16.00	77.50					
DIN DN65	0133 1065 0000 0301	18.00	91.00					
DIN DN80	0133 1080 0000 0301	20.00	106.00					
DIN DN100	0133 1100 0000 0301	21.50	130.00					
ISO DN08	0133 2008 0000 0301	13.50	34.00					
ISO DN10	0133 2010 0000 0301	13.50	34.00					
ISO DN15	0133 2015 0000 0301	14.50	34.00					
ISO DN20	0133 2020 0000 0301	10.00	50.50					
ISO DN25	0133 2025 0000 0301	15.50	50.50					
ISO DN32	0133 2032 0000 0301	15.50	64.00					
ISO DN40	0133 2040 0000 0301	16.50	64.00					
ISO DN50	0133 2050 0000 0301	18.50	91.00					
ISO DN65	0133 2065 0000 0301	20.00	106.00					
ISO DN80	0133 2080 0000 0301	22.50	119.00					
OD 1/2"	0133 3005 0000 0301	13.50	34.00					
OD 3/4"	0133 3007 0000 0301	13.50	34.00					
OD 1"	0133 3010 0000 0301	12.00	50.50					
OD 1 1/2"	0133 3015 0000 0301	15.50	64.00					
OD 2"	0133 3020 0000 0301	14.50	77.50					
OD 2 1/2"	0133 3025 0000 0301	19.00	91.00					
OD 3"	0133 3030 0000 0301	20.00	106.00					
OD 4"	0133 3040 0000 0301	21.00	130.00					

Available materials:

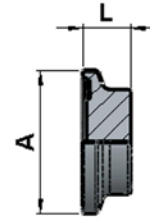
(Item-no. = 4. Block figure 1-3)

Item-No.	Material
020	1.4404
030	1.4435 BN2
045	1.4539
060	2.4602 Hastelloy
070	Titan Grade 2

Available surface qualities:

(Item-No. = 4. Block figure 4)

Item-No.	Medium contacted surface
0	machined surface Ra<=0,6µm
1	electro polished Ra<=0,5µm
2	electro polished Ra<=0,25µm



Aseptik-Blindbündklemmstutzen

## 1.2.3 ASEPTIC CLAMP CONNECTION ACC. DIN11864-3 FORM A

### 1.2.3.4 ASEPTIC CLAMP MALE END CAP

Size	Item number	Length L [mm]	Diam. A [mm]									
DIN DN10	0134 1010 0000 0301	12.00	34.00									
DIN DN15	0134 1015 0000 0301	12.00	34.00									
DIN DN20	0134 1020 0000 0301	12.00	50.50									
DIN DN25	0134 1025 0000 0301	10.50	50.50									
DIN DN32	0134 1032 0000 0301	14.00	50.50									
DIN DN40	0134 1040 0000 0301	14.00	64.00									
DIN DN50	0134 1050 0000 0301	14.50	77.50									
DIN DN65	0134 1065 0000 0301	16.50	91.00									
DIN DN80	0134 1080 0000 0301	18.50	106.00									
DIN DN100	0134 1100 0000 0301	20.00	130.00									
ISO DN08	0134 2008 0000 0301	12.00	34.00									
ISO DN10	0134 2010 0000 0301	12.00	34.00									
ISO DN15	0134 2015 0000 0301	13.00	34.00									
ISO DN20	0134 2020 0000 0301	13.00	50.50									
ISO DN25	0134 2025 0000 0301	14.00	50.50									
ISO DN32	0134 2032 0000 0301	14.00	64.00									
ISO DN40	0134 2040 0000 0301	15.00	64.00									
ISO DN50	0134 2050 0000 0301	17.00	91.00									
ISO DN65	0134 2065 0000 0301	18.50	106.00									
ISO DN80	0134 2080 0000 0301	21.00	119.00									
OD 1/2"	0134 3005 0000 0301	12.00	34.00									
OD 3/4"	0134 3007 0000 0301	12.00	34.00									
OD 1"	0134 3010 0000 0301	10.50	50.50									
OD 1 1/2"	0134 3015 0000 0301	14.00	64.00									
OD 2"	0134 3020 0000 0301	14.20	77.50									
OD 2 1/2"	0134 3025 0000 0301	17.50	91.00									
OD 3"	0134 3030 0000 0301	58.50	106.00									
OD 4"	0134 3040 0000 0301	19.50	130.00									

Available materials:

(Item-no. = 4. Block figure 1-3)

Item-No.	Material
020	1.4404
030	1.4435 BN2
045	1.4539
060	2.4602 Hastelloy
070	Titan Grade 2

Available surface qualities:

(Item-No. = 4. Block figure 4)

Item-No.	Medium contacted surface
0	machined surface Ra<=0,6µm
1	electro polished Ra<=0,5µm
2	electro polished Ra<=0,25µm



O-Ring

## 1.2.3 ASEPTIC CLAMP CONNECTION ACC. NACH DIN11864-3 FORM

### 1.2.3.5 GASKET

Size	Item number												
DIN DN10	0193 1010 0000 1000												
DIN DN15	0193 1015 0000 1000												
DIN DN20	0193 1020 0000 1000												
DIN DN25	0193 1025 0000 1000												
DIN DN32	0193 1032 0000 1000												
DIN DN40	0193 1040 0000 1000												
DIN DN50	0193 1050 0000 1000												
DIN DN65	0193 1065 0000 1000												
DIN DN80	0193 1080 0000 1000												
DIN DN100	0193 1100 0000 1000												
DIN DN125	0193 1125 0000 1000												
DIN DN150	0193 1150 0000 1000												
ISO DN08	0193 2008 0000 1000												
ISO DN10	0193 2010 0000 1000												
ISO DN15	0193 2015 0000 1000												
ISO DN20	0193 2020 0000 1000												
ISO DN25	0193 2025 0000 1000												
ISO DN32	0193 2032 0000 1000												
ISO DN40	0193 2040 0000 1000												
ISO DN50	0193 2050 0000 1000												
ISO DN65	0193 2065 0000 1000												
ISO DN80	0193 2080 0000 1000												
ISO DN100	0193 2100 0000 1000												
OD 1/2"	0193 3005 0000 1000												
OD 3/4"	0193 3007 0000 1000												
OD 1"	0193 3010 0000 1000												
OD 1 1/2"	0193 3015 0000 1000												
OD 2"	0193 3020 0000 1000												
OD 2 1/2"	0193 3025 0000 1000												
OD 3"	0193 3030 0000 1000												
OD 4"	0193 3040 0000 1000												

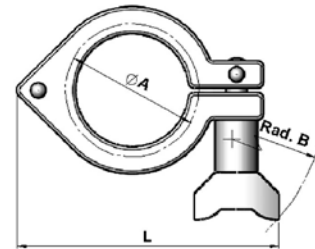
Available materials:

(Item-no. = 4. Block figure 1-4)

Item-No.	Material
1000	EPDM
1010	PTFE
1020	FKM (Viton)
1030	Silikon

Note: Actual data to collect at [www.elpotech.de](http://www.elpotech.de). Specifications and design are subject to change without notice. Date of revision: 05/2018





Clamp-Verschlussklammer

## 1.2.3 ASEPTIC CLAMP CONNECTION ACC. DIN11864-3 FORM A

### 1.2.3.6 CLAMP

Size	Item number	Diam. A [mm]									
DIN DN10-DN15 ISO ND08-DN15 OD 1/2"-3/4"	0191 1020 0000 0138	34.00									
DIN DN20-DN32 ISO DN20-DN25 OD 1"	0191 1040 0000 0138	50.50									
DIN DN40 ISO DN32-DN40 OD 1 1/2"	0191 1050 0000 0138	64.00									
DIN DN65 ISO DN50 OD 2 1/2"	0191 1065 0000 0138	91.00									
DIN DN80 ISO DN65 OD 3"	0191 1080 0000 0138	106.00									
ISO DN80	0191 1100 0000 0138	119.00									
DIN DN50 OD 2"	0191 2050 0000 0138	77.50									
DIN DN100 OD 4"	0191 2100 0000 0138	130.00									

Available materials:

(Item-no. = 4. Block figure 1-3)

Item-No.	Material
021	1.4408 (316)

Available surface qualities:

(Item-No. = 4. Block figure 4)

Item-No.	Medium contacted surface
8	cast surface
1	electro polished